



---

*PDG SHOPPING CART*

# **Addendum to PDG Shopping Cart Version 1.5**

*PDG Software, Inc.*

---





Copyright 1998, 1999 PDG Software, Inc.; All rights reserved.

PDG Software, Inc. ("PDG Software") retains all ownership rights to the software programs (referred to herein as "Software") offered by PDG Software and related documentation. Use of the Software and related documentation is governed by the license agreement accompanying the Software and applicable copyright law.

THIS DOCUMENTATION IS PROVIDED "AS-IS" WITHOUT WARRANTY OF ANY KIND. IN NO EVENT SHALL PDG SOFTWARE BE LIABLE FOR ANY LOSS OF PROFITS, LOSS OF BUSINESS, LOSS OF USE OR DATA, INTERRUPTION OF BUSINESS, OR FOR INDIRECT, SPECIAL, INCIDENTAL, OR CONSEQUENTIAL DAMAGES OF ANY KIND, ARISING FROM ANY ERROR IN THIS DOCUMENTATION.

PDG Software, Inc.  
<http://www.pdgsoft.com>

November 1999





# Contents

**INTRODUCTION ..... 7**

**REMINDERS ..... 7**

**INSTALLATION ..... 8**

    TESTING ON WINDOWS 95/98 LOCALLY ..... 9

*Special Webserver Notes* ..... 9

**PAYMENT METHODS ..... 9**

*AVS Fields* ..... 10

**TEMPLATES ..... 10**

    CHECKOUT/VERIFY TEMPLATES: ..... 11

*PassThrough fields* ..... 11

*Shipping Information* ..... 12

*Credit Card information* ..... 12

**PRODUCT OPTIONS ..... 13**

**CART CONFIGURATIONS OPTIONS ..... 14**

*Cart Options* ..... 14

*Product Search Options* ..... 15

    INTERNATIONAL SETTINGS ..... 15

    STANDARD HTML TEMPLATE FILES ..... 16

**BROWSER NOTES, COOKIES, AOL ..... 16**

**PRODUCT ENTRY ..... 17**

*Good Characters* ..... 17

*Bad Characters* ..... 17

*Corruption* ..... 17

**SHIPPING, UPS ..... 18**

**PGP ENCRYPTION ..... 19**

*PDG Cart and PGP Software* ..... 19

**SOFT GOODS ..... 19**

*Softgood Data and PDG Cart* ..... 19

**INVENTORY ..... 21**

**BACKUPS ..... 23**

**SECURITY ..... 24**

*NT Security* ..... 24

*UNIX Security* ..... 26

**MICROSOFT FRONTPAGE AND NETOBJECTS FUSION COMPONENTS ..... 27**





## Introduction

This advisory has been created in response to feedback from our customers. It contains advice about optimizing PDG Shopping Cart and includes issues on:

- [Reminders](#)
- [Installation](#)
- [Payment Methods](#)
- [Templates](#)
- [Product Options](#)
- [Cart Configurations Options](#)
- [Browsers, cookies, AOL](#)
- [Product Entry](#)
- [Shipping, UPS](#)
- [PGP](#)
- [Soft Goods](#)
- [Inventory](#)
- [Backups](#)
- [Security](#)
- [Microsoft FrontPage and NetObjects Fusion Components](#)

Please read each section carefully.

## Reminders

Check with your ISP and verify the operating system (OS) used on their servers. PDG Software supports Linux, BSDi, FreeBSD, Solaris, DigitalUnix, Microsoft Windows NT, and IRIX.

Make sure you are using the correct PDG Shopping Cart version for that OS, e.g. if your ISP is using Microsoft Windows NT on their host server, you must use the Microsoft Windows NT version of PDG Shopping Cart.

The PDG Shopping Cart executable (in your cgi-bin directory) must be *shopper.exe* on Microsoft Windows NT systems.

The PDG Shopping Cart executable (in your cgi-bin directory) must be *shopper* or *shopper.cgi* on the various UNIX systems.

Get into the habit of hitting "Make Changes Live" every time you enter a new product or make changes to products. It can be your first line of defense against corruption, as a corrupted database will probably have to be restored to the last time you made changes live. If you suspect that there may be some corruption in your database, DO NOT MAKE CHANGES LIVE! Doing so may make it



impossible to recover your database without contacting your system administrator for a backup copy. See the section on [Backups](#) for more details.

## Installation

It cannot be stressed strongly enough, how important it is that your PDG Cart site have the proper permissions set, not only for security reasons, but also to ensure proper operation of the cart. Many errors in functional operation of the cart can be traced to having improper permissions on the cart directories or files, particularly the PDG\_Cart directory.

If you are running on a UNIX server, the proper permissions for the PDG\_Cart directory in your cgi-bin are "777", or "-rwxrwxrwx" (full permissions).

If you are running on a Windows NT machine, the permissions for the PDG\_Cart directory (and all files and subdirectories it contains) are "Change (Read, Write, Execute, Delete)" for the browser user.

Note that PDG Shopping Cart is a server-side program. No client-side version of it exists. To operate properly, it is necessary to have a web server program running on the machine that you want the cart to run on, and the pages must be viewed through that server. Simply previewing them in your HTML editor on your local machine is not enough, because the elements will not work properly.

Many merchants may become confused about uploading their license to their site. When you receive a license in your email, it may arrive either inline (in the body of the email), or as an attached file.

If it comes as an inline file, you can simply highlight it, copy it, and paste it into a blank text file. When you save the file, you must make certain it is named "shopper.lic", otherwise the cart will not recognize it (for example, do NOT name it "shopper.txt" or "shopper.lic.txt").

If it comes as an attached file, it should be already formatted properly. Save it to your hard drive for reference.

In either case, at this point you may upload the file. You must upload it in the location of the previous license; this will be in your "PDG\_Cart" directory, under your cgi directory.

See the [Security](#) section for more information about setting server permissions.



## Testing on Windows 95/98 locally

PDG Cart requires a webserver to run properly. Microsoft Windows users can use "Microsoft Personal Webserver" or may download any number of free websevers from the Internet.

### Special Webserver Notes

Any webserver used must support cgi-binary execution.

PDG Software may not be able to install PDG Cart to a local machine that does not have a static Internet address (IP).

It is the customer's responsibility to have a functioning webserver on a site for PDG Cart to function properly. Note that you must obtain a license for your local machine. This request may be denied solely at the discretion of PDG Software.

## Payment Methods

Currently, PDG Cart supports seven different online payment authorization services:

1. Combill
2. CyberCash
3. AuthorizeNet
4. E-Commerce Exchange
5. PaymentNet/Signio
6. EFTSecure
7. CSI/Linkpoint API

These services are all similar in setup. Some may have unique fields that should be described on the individual method pages. Each contains a field near the bottom for a logfile name. The logfile name can be specified by the user and if it does not exist will be created. This file can be found by default in the PDG\_Cart directory, and is a good point of reference if you are having problems with your merchant account.

Certain payment processors are not available on all platforms. Most notably, CyberCash, PaymentNet/Signio, and Linkpoint users may experience difficulties here.

The following is a list of payment methods versus incompatible platforms:

CyberCash - Cobalt Linux, Libc5 Linux

PaymentNet/Signio - Cobalt Linux, Libc5 Linux, Intel Solaris, Digital Unix



Linkpoint API - Cobalt Linux, Libc5 Linux, Intel Solaris, Digital Unix  
Note that if your payment methods are not specified as "all conx" (all connections), you may not have certain payment methods available on certain types of connections. For maximum flexibility, each defined payment method should be used on "all conx".

## AVS Fields

AVS is the Address Verification System used by some, but not all, Internet payment services.

By enabling the field, PDG Shopping Cart will deny any order that your bankcard processor may authorize, despite the failure of address verification (AVS). In other words, the AVS auto-deny feature allows PDG Shopping Cart to reject orders with certain AVS responses such as mismatching addresses. *Note that AVS denied transactions are actually successful transactions that are then voided after an AVS failure is detected.*

## Templates

Everything that a customer sees through the PDG Cart is customized through the templates that are, by default, in your "PDG\_Cart/Templates/" directory.

If you move the location of these Templates, you should change their paths in the Merchant Administrator Cart Options. These are normal HTML files and should work fine in any HTML editor.

A basic review of the tags in the PDG Cart manual (Appendix B) should prepare you for editing these tags yourself. The following tags were added/removed/changed since the printing of that manual:

### **AddItem template:**

```
<!--UNITPRICERECALCSCRIPT-->
```

This is case-sensitive, and should always appear as:

```
<!--UnitPriceRecalcScript-->
```

Note that it must appear *between* the <head> </head> section of the page.

### **Item template:**

```
<!--PRCAT-->
```

Note that this tag must appear on the Item template if pricing categories are to be functional.



<!--TEXT-->

This tag is replaced with the data entered in the large text box "Product-Specific Description Text". It may or may not contain HTML. Note that if it does not, it may not be formatted exactly as you intended. If this is the case, surround your text with <PRE> and </PRE> tags.

<!--ITEMOPT-->

Note that it is not possible in current versions of the cart to format the output of this tag

!--SKU--

This tag can be used on large sites to prevent the need to input all of the picture hyperlinks. If you include a link in your Item template that looks like , you can then name each of your images after their sku, place them in the images folder, and each will automatically be referenced correctly on the site.

<!--ITEMRECALCFIELD-->

This tag is must appear on the Item template if the template is to support dynamic price recalculation.

## CheckOut/Verify templates:

### PassThrough fields

Any form field whose name begins with the four letters "PASS" will have its values automatically forwarded to the final ThankYou templates and emails. For example:

```
<input type=text name=PASSPhone size=20>
```

will create a phone number field in this template for customer input. Whatever the user types in this field is automatically forwarded to the emails, ThankYou templates, and order.log file.

Note that it is not mandatory for the customer to enter any information in this field - they can leave it unfilled and still check out normally. This field could be made mandatory by using JavaScript, but this is outside the normal functionality of the cart.

<!--SHIPPINGMETHOD-->

This field is almost always required. If you are planning to remove this field (for instance, if you have only one shipping method), you will need to replace it with an input field like the one below:

```
<input type=hidden name=shipmethod value=0>
```



```
<!--BILLCOUNTRY-->
```

This field can be removed, but must be replaced with its equivalent HTML. For instance, if you only offer shipping to the United States, this field would look like:

```
<input type=hidden name=billcountry value=~US">
```

If you wanted to offer shipping to the US and Canada:

```
<select name=billcountry>
  <option value=~US">United States
  <option value=~CA">Canada
</select>
```

In this case, a list of the country codes you would need to reference can be found in Appendix D of the PDG Cart Manual.

## Shipping Information

All of the shipping information on the checkout template can be removed, if *either one, but not both*, of the following steps has been taken:

1. You uncheck the box "Requires Shipping Info" for the selected shipping methods in the Administrator, or
2. You hide the "Ship To Billing Address", by replacing it with the following code:

```
<input type=hidden name=shiptobilladdr value=1">
```

## Credit Card information

You can change and separate the inputs for the credit card expiration date. These fields are called "cardexpmonth" and "cardexpyear" and can replace the "cardexp" field in a manner like the following:

Expiration Date: <select name=cardexpmonth>

```
<option value="01">Jan
<option value="02">Feb
<option value="03">Mar
<option value="04">Apr
<option value="05">May
<option value="06">Jun
<option value="07">Jul
<option value="08">Aug
<option value="09">Sep
<option value="10">Oct
<option value="11">Nov
<option value="12">Dec
```

```
</select>
```

```
<select name=cardexpyear>
  <option value="99">1999
```

Note that the number value for the month *must* be passed to PDG Cart, not the month name or abbreviation.



```
<option value="00">2000
<option value="01">2001
<option value="02">2002
<option value="03">2003
<option value="04">2004
<option value="05">2005
<option value="06">2006
<option value="07">2007
<option value="08">2008
<option value="09">2009
</select>
```

This would create a box like the following:

Expiration Date:

## Product Options

For every product option created on the main product details screen, PDG Cart will create one "dropdown"-style listbox. The contents of each of these listboxes are created in the details for each option: For each entry on the Products Option Details screen, one entry will be created in the listbox. So, for example, to create the two listboxes below:

COLOR:

SIZE:

You would create a product option hierarchy like the one below.

- Option 1: Color
  - Detail 1: Red
  - Detail 2: Yellow
  - Detail 3: Blue
- Option 2: Size
  - Detail 1: Small
  - Detail 2: Medium
  - Detail 3: Large



## Cart Configurations Options

The following options have been added or changed in the Cart Configuration Menu:

### **Cart Options**

#### **Display Inventory by Number?**

Checking this box will display the actual amount of product in inventory when the cart encounters the <!--INV--> tag, rather than "Available" or "Unavailable"

#### **Decimal Places in Prices:**

This text entry field allows you to extend or retract the number of decimal places displayed in prices. For instance, if you want to display whole dollar amounts on your website, you would set this to 0. If you have products that cost less than one hundredth of your primary currency, you can extend this to 3, 4, or whatever length you require.

**WARNING:** Due to the way prices are kept internally in the cart, a number larger than 8 in this field may not be stored precisely.

#### **Weeks Until Carts Expire?**

This value should not be "0" or it will cause problems with operation of the cart.

#### **Minimum Weight of Order to Accept:**

This text entry field allows you to specify a weight, below which a total order will not be allowed to proceed to checkout.

#### **Invalid Option Selection Error Message:**

This text field allows you to enter a message to display when a customer selects a combination of options that, together, is invalid.

#### **Display 'Shop Some More' button?**

This checkbox will allow you to disable or enable the "Shop Some More" button on your Basket template.

#### **Complete URL of Destination of 'Shop Some More' button:**

This field should be filled out. The current trend of leaving this field blank and allowing the button to act as a "back" button is not supported and should not be implemented.



## Product Search Options

### Order of Search Results:

This selection box allows you to change the order in which search results are returned on the search result template. There are two options here: Results can be returned alphabetically by sku (product code) or by description.

## International Settings

### Locale Setting

This field is no longer used.

### Currency Accepted:

This indicates the primary currency from the "currency.txt" file that will be used on the webstore for all pricing displays. The default currency used by PDG Shopping Cart is US dollars. If you must use some other currency settings, you must create the currency.txt file using the following structure. The currency.txt file MUST be located in the PDG\_Cart directory.

Label	Variable width format	Fixed Width Format
US Dollars	US \$%.2f	US \$%9.2f
British Pounds	£ %.2f	£ %9.2f
Canadian Dollars	CAN \$%.2f	CAN \$%9.2f
Euro	€ %.2f	€ %9.2f
Deutschmark	DM %.2f	DM %9.2f
French Franc	Fr %.2f	Fr %9.2f

### Secondary Currency:

This indicates the secondary currency from the currency.txt file that will be displayed next to the primary currency on all pricing displays.

### Secondary Currency Conversion Factor:

Specifies the conversion factor (multiple) between the primary and secondary currencies.



## Standard HTML Template Files

### **Basket Empty HTML Template**

When using a custom-formatted basket template, this field allows for the use of a template to display when the customer views their cart with nothing in it.

### **Template to display if authorization fails:**

This is the template to use if credit card authorization fails.

### **Template to display if authorization succeeds**

This is the template displayed once credit card authorization has succeeded.

### **SSL Thank You Template File:**

This is an alternate ThankYou template that will be used once the customer has completed a non-authorized transaction over a secure connection.

### **Search Results Empty HTML Template:**

When using a custom-formatted search results template, this field allows you to specify a special template to return when the cart cannot match any products in a search.

### **E-mail Notification Options**

Due to the variation in email clients, you will most likely need to fill out every field in the email setting (except possibly the QMAILUSER field) for your emails to work properly in the cart.

## Browser Notes, cookies, AOL

You must have cookies enabled on your browser to use the PDG Cart. If you or your customers attempt to use the cart without cookies enabled, a variety of strange activities could ensue. It is likely you will be unable to check out if you are not using a cookie-enabled browser. For more detailed information on cookies, see Appendix A in the manual.

AOL Browsers have several difficulties, particularly with a framed environment. If you are having difficulties with your website and have frames on your site, try running through your site with the frames disabled, or even simply remove the target names from the "Frames" settings in the Merchant Administrator. If this solves your problem, your browser is probably at fault.



## Product Entry

When creating product SKU's, descriptions, and other such inputs in PDG Cart, care must be taken that certain characters are avoided in these fields. Some characters are difficult to translate through an HTML interface, and others may display incorrectly or cause corruption to your database when used in conjunction with the cart.

### Good Characters

In general, one should stick to the basic 26 upper- and lowercase letters, and the 10 digits 0-9, plus the dash and the underscore (for a total of 64 characters:

ABCDEFGHIJKLMNOPQRSTUVWXYZ  
abcdefghijklmnopqrstuvwxyz  
1234567890\_-

### Bad Characters

Specifically, the following characters should be avoided:

Name	Character	Name	Character
Question mark	?	Colons	:
Ampersand	&	Vertical Bars	
Angle brackets	< >	Asterisks	*
Spaces		Square brackets	[ ]
Double quotes	"	Curly brackets	{ }
Single quotes	'	Parentheses	( )
Slashes	/ \	Comma	,
Plus signs	+	Exclamation Points	!
Equal signs	=	"at" symbol	@
Percent signs	%	Tilde	~
Hash marks	#	Backquote	`
Semicolons	;		

Other characters are used at your own risk.

### Corruption

Use of these characters can corrupt your product database. If this occurs, immediately back up your database, and delete any ".stage" files that may exist in your PDG\_Cart directory. If this does not fix the problem, you may still be able to save your products database. Contact PDG Technical Support for assistance.



# Shipping, UPS

The shipping screen has changed.

## PDG Shopping Cart Shipping Costs Configuration

Status: The settings displayed here have not been made live.

[Return to Main Menu](#)

### Shipping Methods

These rules describe the shipping methods that will be made available to customers. Press the **Remove** button next to a listed shipping method to remove it. To add a rule, fill in the form entries and select **Add**. You may specify if a particular shipping method costs extra, or if PDG Shopping Cart needs to collect separate shipping information. For delivery methods such as downloading, collecting extra shipping information may not be required.

Rule #	Description	Additional Cost	Add cost from UPS?
No shipping methods are defined.			
<input type="checkbox"/>	<input type="text"/>	<input type="text"/>	<input type="text" value="No"/>
<input checked="" type="checkbox"/>	Requires Shipping Info		
<input checked="" type="checkbox"/>	Add Subtotal Rules?		
<input checked="" type="checkbox"/>	Add Weight Rules?		
<input checked="" type="checkbox"/>	Add Quantity Rules?		
<input type="button" value="Add"/>			

Currently, shipping changes are a combination of three methods:

1. The base shipping charge for the selected method is applied.
2. The UPS Quick Cost Calculator is used, if it applies to that method.
3. Any applicable weight, quantity, or subtotal rule is added, if those rules apply for that method.

When you create a shipping rule, if you de-select "Requires Shipping Info", the customer will not be required to list shipping information OR check the box "Ship to Billing Address". This also causes shipping information not to display on the Verify template next to the billing information. Usually, you will only use this setting for products that do not have to be physically shipped, like software, or products that the customer is going to pick up directly from your location.

*Note that you can place a percentage in the additional amount fields, rather than a monetary amount.* In this case, the percentage of the currently running total will be added to the total cost, rather than a pre-calculated amount.



## PGP Encryption

### PDG Cart and PGP Software

PDG Cart currently supports two files for encryption through PGP:

- order log can be encrypted
- vendor emails can be encrypted

Note that these are the two main places where credit card information may be transmitted insecurely.

To encrypt either file requires three steps:

1. Generate a public key for encryption, and place it in the PDG\_Cart directory in a public keyring. (It may be named something like "pubring.pkr")
2. Place the "pgpe" (or "pgpe.exe") binary in the PDG\_Cart directory. Note that this binary in the default UNIX distribution is named "pgp", and may be renamed to "pgpe", "pgps", or "pgpo" depending on the functionality you want PGP to perform. Refer to the PGP documentation for details.
3. Place the keyID of the public key you wish to encrypt within angle brackets immediately after the field you wish to be encrypted.

Examples:

Order Log File: order.log<0x02AFD1B7>

Email Vendor Notifications to: me@myaddress.com<0x08832BBD>

There must be no spaces between the field and the angle brackets or after them. PGP will be automatically invoked to encrypt upon ordering.

## Soft Goods

### Softgood Data and PDG Cart

To set up softgood data requires the completion of up to five fields in the product definition file.

1. **Softgood Data to Display on ThankYou / CreditAccept Template:**  
This field contains HTML that will be displayed in place of the



<!--SOFTGOODS--> tag on the ThankYou.html template or the CreditAccept.html template, once authorization of the payment method has been approved.

*Note: this means that if the type of payment was not to collect credit card information, the softgoods will not be downloadable because payment will not be instantly verifiable. Note also that if you use no online authentication, a customer could theoretically use a maxed out credit card to download your softgood product.*

This field should ordinarily contain a hyperlink to download the software sold, i.e. a hyperlink to the special tag <!--DELIVERPAYLOAD--> .

Example: <a href="!!--DELIVERPAYLOAD--">Download Now!</a>

**2. Location of Softgood Payload:**

This field should contain the PDG\_Cart relative (or absolute, if prepended with a slash) location of the softgood program or document. Note that this is NOT a full http:// type address, but is the relative address to PDG\_Cart on the host server. It is dependent upon the actual file location of the softgood program or document. Generic examples are:

**Relative** - payloads/file.txt or /payloads/file.txt OR

**Absolute** - \user\local\cgi-bin\payloads\file.txt

**3. MIME Type of Softgood Payload:**

This field contains the server MIME-type of the document or program. This field could be a variety of things, for example, “image/jpeg” for a .jpg picture. It should always be in the format <majortype>/<subtype>. A list of common mime types can be found at <http://www.pdgsoft.com/mimetype.html>

**4. Maximum Number of Allowed Downloads of Softgood Payload:**

Specifies the number of download attempts you will allow, i.e. it limits the number of downloads a customer can perform.

**5. Duration of Download Window (in Minutes) of Softgood Payload:**

This will prevent users from downloading the software after a certain period of time has passed.

## Inventory

The procedure for setting up Inventory Tracking has changed.

### Step 1.

From the Merchant Administrator main screen, click on 'Cart Options' then place a check mark in the '**Track Inventory for Entire Site?**' field.

Product Database Filename:	<input type="text" value="products.pdg"/>
Product Database contains over 1000 products?:	<input type="checkbox"/>
Display Pricing & Subtotals?:	<input checked="" type="checkbox"/>
Track Inventory for Entire Site?: (check box to track)	<input checked="" type="checkbox"/>
Allow Price Recalculations on Catalog Pages?: (check box to enable)	<input type="checkbox"/>

This field is a "global control" setting that enables inventory tracking. ***You must have this field enabled in order to track inventory, even if you want to track inventory for just one product.***

### Step 2.

Click on the "Submit Changes" button.

### Step 3.

Click on the "Return to Main Menu" link.

### Step 4.

Click on "Products" and the Available Products page will appear.

**PDG Shopping Cart Available Products**

Status: These settings are live.

[Return to Main Menu](#)

This is a list of available products for the customer. Press the **Remove** button to remove a product from the list. Press the **Details** button for a product to see specific configurations for that product, such as available options and product weight. To add a product, complete the form entries and press the **Add** button. When adding a product, make sure its product code is unique.

Product Code	Product Name	Weight	Options	Item
<input type="text"/>	<input type="text"/>	<input type="text"/>	<input type="text"/>	<input type="button" value="Add"/>
A0001	Small gadget	5.00	<input type="button" value="Details"/>	<input type="button" value="Remove"/>
A0002	Huge Widget	25.00	<input type="button" value="Details"/>	<input type="button" value="Remove"/>
A0003	Medium Thingamajig	15.00	<input type="button" value="Details"/>	<input type="button" value="Remove"/>

Figure 4 – Current Inventory page.

**Step 5.**

Click on the “Details” button for the product whose inventory you want to track and the Product Definition page will appear.

**Step 6.**

Scroll down to the “Track Inventory” section.

**Track Inventory**

These settings allow you to control the inventorying for this specific product. To enable tracking for this product, check the first box. To disable, leave the box unchecked. If the product has options, you may track inventory by its options by checking the second box.

Track Inventory for Product?

Track Inventory for All Option Variations?

**Warning!** If you select “Track Inventory for All Option Variations?:” you must append the SKU’s for each option. For Example: A0001 is the SKU for the Small gadget, therefore A0001Red would be the SKU for a Small gadget whose option was the color red.

**Step 7.**

Read the descriptions of the available selections, then check the selection you prefer for Inventory Tracking.



**Step 8.**

Click on the "Submit Changes" button.

**Step 9.**

Scroll up to the top of the page, then click on the "Return to Main Menu" link.

**Step 10.**

Click on "Inventory" and the Current Inventory page will appear. Note that it only lists the products you are tracking.

Product Code	In Stock	Do Not Allow Backordering?	Do Not Display in Searches If Out Of Stock?
A0002	<input type="text" value="1"/>	<input checked="" type="checkbox"/>	<input checked="" type="checkbox"/>
A0003	<input type="text" value="0"/>	<input type="checkbox"/>	<input type="checkbox"/>

**Step 11.**

Change the "In Stock" amounts of product as necessary.

Select whether to allow backordering or not.

Select whether to display the product in searches if out of stock.

Click on the "Submit" button.

## Backups

You should backup your cart files often. In the event of a server crash or a miscalculated deletion, such files can come in quite handy. There are several files you should back up. All are under your "PDG\_Cart" directory.

- products.pdg
- shopper.conf
- shipping.conf
- All of the files in "cgi-bin/PDG\_Cart/ProdText"
- All of your Template files, if they've been modified.

Generally, it is a good idea to backup your entire PDG\_Cart directory, if you have the space. Such a backup can be performed inside many popular ftp programs, and several HTML editors. If you need more help with this topic, please contact your ISP for your required method to access/copy these files.

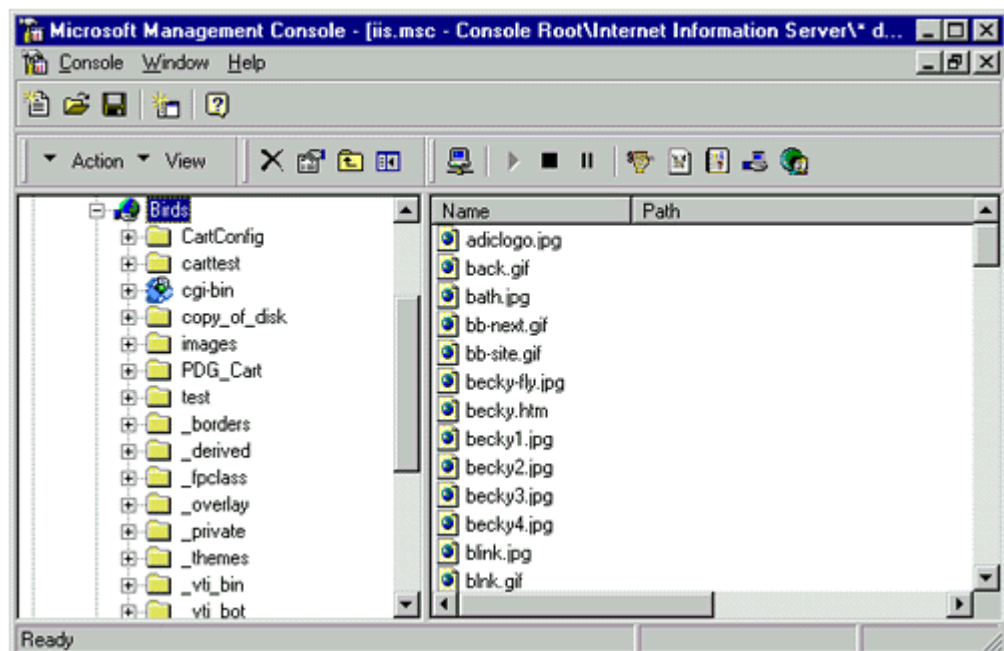
## Security

### NT Security

The following instructions will assist NT administrators in the modification of server level permissions which will close the security holes referenced in News Articles that appeared beginning April 22nd.

#### STEP 1.

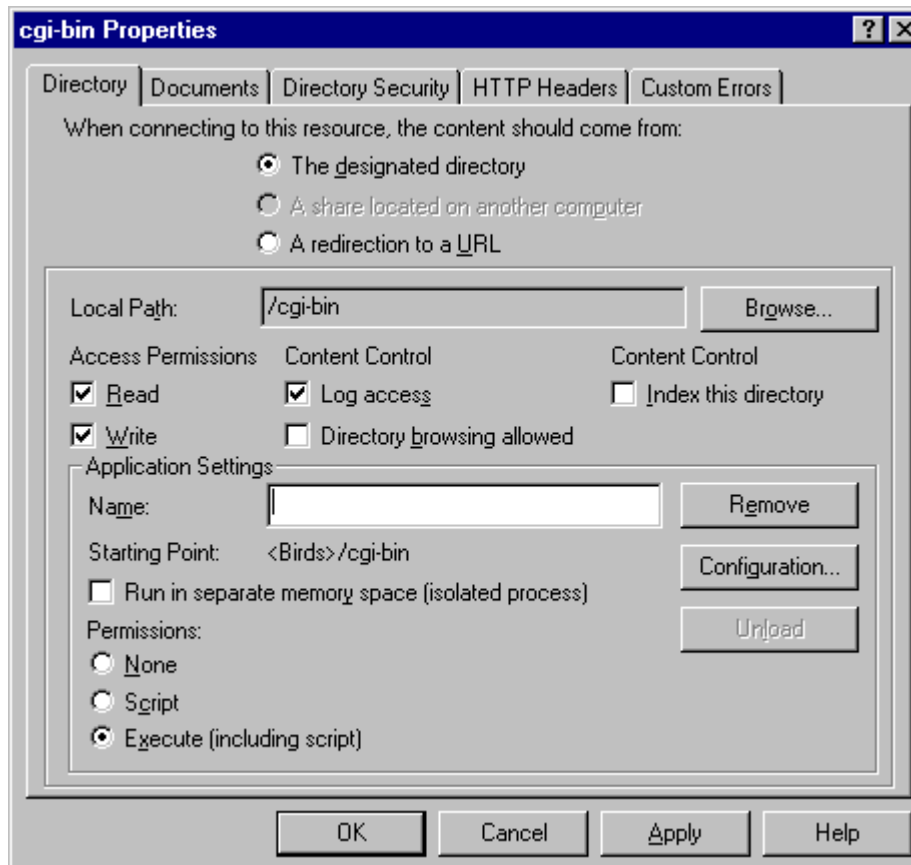
Open your NT Management Console (may also be referred to as Microsoft Internet Service Manager).



*Snap shot of management console with Web site open for a site named "Birds"*

#### STEP 2.

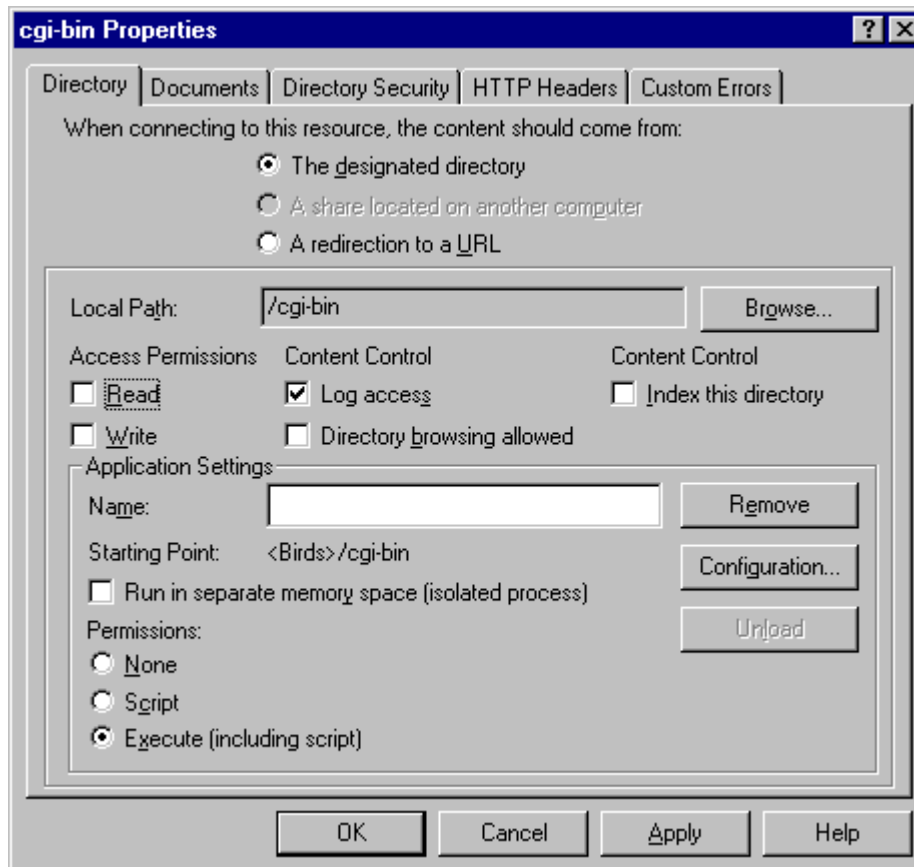
In the left hand window, locate the directory of the Web site in question and right click on the CGI directory and select properties. This brings up the following dialog box:



*Snap shot of the cgi bin Properties dialog box showing Read and Write permissions set to "On".*

**STEP 3.**

Under the Access Permissions heading, you should remove any check marks that appear in the Read and Write fields:



*Snap shot of cgi bin properties dialog box showing Read and Write permissions correctly set to "OFF".*

**STEP 4.**

Click Apply and then click OK.

**UNIX Security**

**Locking Down your Unix Web Store**

Some of the information in this document may have come from [The Mosaic User Authentication Tutorial](#), a document referring to NCSA HTTPd, and may refer to documents or configurations that may or may not match your or your ISP's website configuration. Any discrepancies in the configuration mentioned here and the configuration of your website should be taken up with your website administrator or your ISP. This webserver is merely a sample chosen based on standards and in no way is meant to endorse NCSA HTTPd, Apache webserver, or any other web server software that supports this method of protection.



If you don't need any special functionality concerning password-protecting parts of your store, and you simply want to lock certain directories from being viewable, the following should be of some use to you:

Filename: **.htaccess**

Location: **/cgi-bin/PDG\_Cart/.htaccess**

Alt. Location: **/cgi-local/PDG\_Cart/.htaccess**

Contents:

```
AuthUserFile /dev/null
AuthGroupFile /dev/null
AuthName Unknown
AuthType Basic
```

```
<Limit GET>
deny from all
</Limit>
```

## Microsoft FrontPage and NetObjects Fusion Components

If you are using either Microsoft FrontPage or NetObjects Fusion as the HTML editing tool for creating your web site, you must download and install its PDG Shopping Cart component and guide. This will make developing your site much faster and easier.

Go to the PDG Software web site. Click on the Products and Services link, then click on the Downloads link and download the appropriate component and guide. Follow the installation and activation instructions in the guide.

