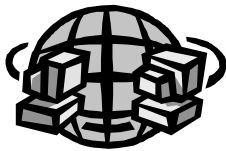


PDG Shopping Cart 2002 Service Release 1



This addendum documents the new features and changes introduced with Service Release 1 of PDG Shopping Cart 2002. Please note the following areas of PDG Shopping Cart 2002 have been updated with Service Release 1:

- Installation Changes
- Merchant Administrator Changes
- Shipping with United States Postal Service
- Product Definition Changes
- Template Changes
- Payment Service Changes
- Order Logging Changes
- Changes Regarding Bill-To and Ship-To Countries

Please read each section carefully.

Reminders

Check with your ISP and verify the operating system (OS) used on their servers. PDG Software supports Linux, BSDi, FreeBSD, Solaris, DigitalUnix, Microsoft Windows 2000/NT, and IRIX.

Make sure you are using the correct PDG Shopping Cart version for that OS, e.g. if your ISP is using Microsoft Windows 2000/NT on their host server, you must use the Microsoft Windows 2000/NT version of PDG Shopping Cart.

Get into the habit of hitting “Make Changes Live” every time you enter a new product or make changes to products. It can be your first line of defense against corruption, as a corrupted database will probably have to be restored to the last time you made changes live. If you suspect that there may be some corruption in your database, **DO NOT MAKE CHANGES LIVE!** Doing so may make it impossible to recover your database without contacting your system administrator for a backup copy.

Installation Changes

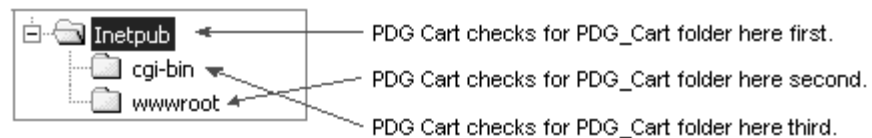
The PDG_Cart folder for your PDG Shopping Cart can now be located outside of your web site’s document filesystem. This allows for additional security since PDG Shopping Cart’s sensitive configuration and data files can be put in a location from where the web server will not serve documents. This location is specifically one folder up from the web site’s document root. For example, if you ftp into your web site, and the folder you initially see contains an ‘html’ folder where all your documents are stored, you can place the PDG_Cart folder parallel to the ‘html’ folder.

NOTE: This change in locating the PDG_Cart folder does not effect existing PDG Shopping Cart installations. If your PDG Shopping Cart is running fine with the PDG_Cart folder inside your cgi-bin directory (and your directories and data are sufficiently protected with proper permissions and htaccess files), then you do not have to change anything.

When PDG Shopping Cart executes, it will search for PDG_Cart in the following locations:

1. Outside of the web site’s filesystem, specifically one folder up from the document root. **Note:** You may not have access to this folder. Please check with your hosting provider to see if you have the ability to locate files in this location.
2. Directly inside the web site’s filesystem, specifically located directly in the document root
3. Inside the cgi directory

An example of this would be:

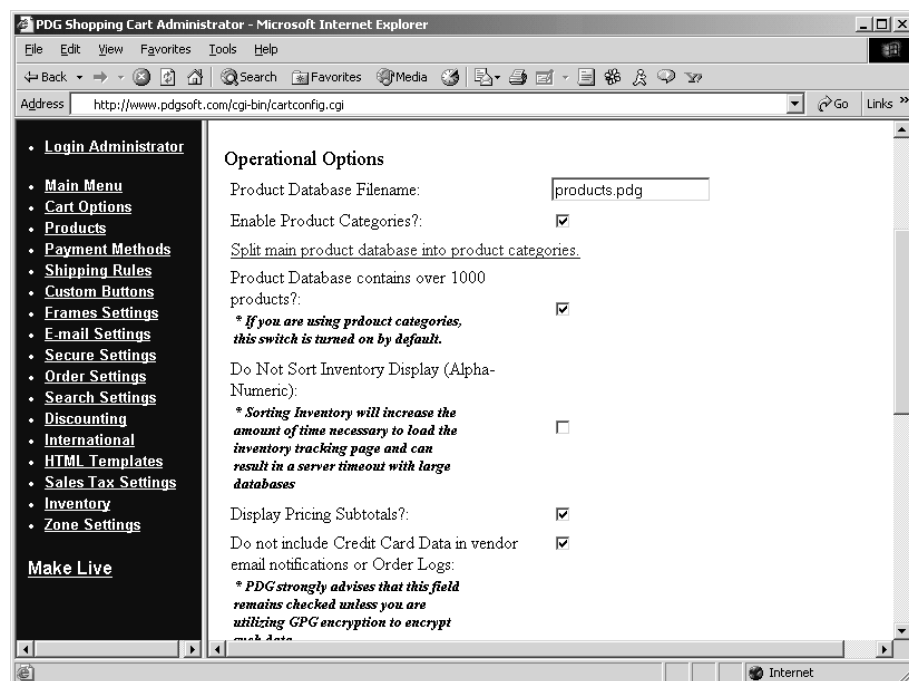


IMPORTANT NOTE: If you place your PDG_Cart directory inside your document root or cgi directory, please ensure that:

1. If your web server is Unix based, that you have an .htaccess file in the PDG_Cart directory set to deny web server access to all, AND that the web server is configured to utilize these .htaccess files. You may need to consult with your hosting company to ensure that the web server recognizes .htaccess files.
2. If your web server is Windows based, that the webserver is configured to not allow read access to the PDG_Cart folder. This IS NOT the same as file permissions - this is a web server setting. For example, with Microsoft Internet Information Server, this is set within the IIS section of the Microsoft Management Console. Please see the Windows Permissions Guide for PDG Shopping Cart for more specific information regarding these settings.

Merchant Administrator Changes

The Merchant Administrator can optionally display a navigation bar on the left side of the web page. This should make traversing through the Administrator's various sections easier. You can turn on the navigation bar on a per session basis when logging into the Merchant Administrator



Shipping with United States Postal Service

PDG Shopping Cart 2002 now supports real-time quotes for shipping via the United States Postal Service. To utilize this service, you must first register with USPS at <http://www.uspswebtools.com>. Once you have registered, you can proceed to configuring PDG Cart.

Next, enter your administrator and select "Shipping Rules". From here, select "USPS Configuration". On the resulting page, you should enter in your USPS User ID and password. Click the "Submit USPS User Information" to save the User ID and password within PDG Cart.

In Order to use U.S. Postal Service on-line tools, you need to register at www.uspswebtools.com. If you have already registered, just type in your user ID and password in the space provided below and click on 'Save USPS User Information'. Once you have entered and saved your USPS information you can set up shipping methods using USPS Services.

User ID: Password:

Now from the "Shipping Rules" main page, you can add shipping methods that will communicate with USPS directly for real-time quotes. You can select "USPS" for the Real-Time Shipping Settings Carrier. The Real-Time Shipping Settings Method will dynamically change to indicate the types of USPS services available - choose the appropriate service for the method you are defining. You may also specify the type of packaging that will be associated with the shipping method. Click "Add Shipping Method" to save the new USPS method.

Rule #	Description	Additional Cost
<input type="checkbox"/>	USPS Priority Mail	5.00

<p>General Shipping Settings</p> <p><input checked="" type="checkbox"/> Requires Shipping Info</p> <p><input type="checkbox"/> Add Subtotal Rules?</p> <p><input type="checkbox"/> Add Weight Rules?</p> <p><input type="checkbox"/> Add Quantity Rules?</p> <p><input type="checkbox"/> Do Not Display on Checkout Page?</p>	<p>Real Time Shipping Settings</p> <p>Real Time Carrier: <input type="text" value="U.S. Postal Service"/></p> <p>Real Time Method: <input type="text" value="Priority Mail"/></p> <p>Pickup: <input type="text" value="Not Applicable"/></p> <p>Packaging: <input type="text" value="Shipper Supplied Packaging"/></p> <p>Back Up Method: <input type="text"/></p>
--	---

** You Can Use a Combination of General and Real Time Shipping*

Discount Shipping By For Orders That Are Over In Total Cost

You may also have PDG Cart display a selection of different USPS delivery methods and pricing, and allow the customer to choose the method based on the rates. To do this, create a new shipping method with USPS, with “Real-Time Shipping Settings Method” set to “Compare Rates”. Next, enter the “USPS Configuration” and check the boxes next to the methods you wish to be offered to your customers. Make sure to save the configuration with “Submit USPS User Information”.

The real-time USPS shipping costs can be used in conjunction with the other rule sets, such as a rule that applies a certain shipping charge based on subtotal or order weight. You can also use the “Additional Cost” field of the shipping method to charge an additional flat amount or percentage above the real-time cost. For example, you can have a shipping method that retrieves the real-time shipping cost for Priority Mail, and then adds a 15% handling charge to the retrieved amount (entered as ‘+15%’).

Product Definition Changes

Some new fields have been added to the products’ definitions. You may now store a product’s height, width, and depth for each product. This information will be used primarily with real-time shipping cost rate services, currently only with USPS.

Weight:	<input type="text" value="1.00"/> lbs.
Unit Of Measure Label	<input type="text"/>
Frequent Shopper Points:	<input type="text" value="25.00"/>
Number of Items Per Box:	<input type="text" value="1"/>
Product Dimensions:	Height: <input type="text" value="0.00"/> Length: <input type="text" value="0.00"/> Width: <input type="text" value="0.00"/>
Allow Fraction Quantity?:	<input type="checkbox"/>
URL of Product Image:	<input type="text" value="/images/gadget1.gif"/>
URL of Thumbnail Image:	<input type="text" value="/images/gadget1.gif"/>
Item Template	<input type="text"/>

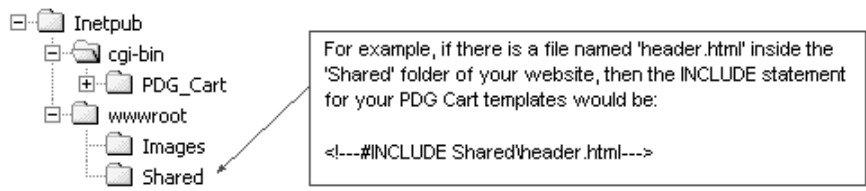
You can now specify a weight change on a per option basis for each product. The weight change can have a fractional amount.

Add a new option selection

Selection #:	<input type="text"/>
Available Selection:	<input type="text"/>
SKU Suffix:	<input type="text"/>
Price Change if Chosen:	<input type="text" value="0.00"/>
Taxable Price Change:	<input type="text" value="0.00"/>
Weight Change if Chosen:	<input type="text" value="0.00"/>
Custom Text:	<input type="checkbox"/>
Cost/Letter of Text:	<input type="text" value="0.00"/>
Taxable Custom Text Price:	<input type="text" value="0.00"/>

Template Changes

You can now include html, text, or other files in your PDG Cart templates, much like an 'include' within a server-side html page. This allows for common elements of your web store, such as a navigation bar, header, or footer, to be included throughout your web store templates. The format for this tag is "<!--#INCLUDE [filename]-->", where "[filename]" is the name of the file to be included. The file must be located in your web store's document filesystem, and specifically not within any PDG support folder (such as PDG_Cart). You can include subfolder information within the filename, however any filename that tries to traverse up folders will be ignored. Note that this only takes a file and embeds its contents verbatim into the template. It does not execute any programs or scripts.



You may now instruct PDG Shopping Cart to retrieve information from a web-server (your own or another) to be embedded in a template. This allows you to embed another web page that contains server-side scripting, such as asp or php,

into your templates. The format for this tag is “<!--#CGI [url]-->”, where “[url]” is the URL, complete or partial, to the cgi program or document to be retrieved from the webserver. The cgi program can be on a regular server, or on an SSL secured server.

Here are some valid CGI examples:

```
<!--#CGI http://www.somewhere.com/cgi/something.cgi-->
This retrieves the output of the cgi program 'something.cgi' from
'www.somewhere.com'.
```

```
<!--#CGI /cgi-bin/cgi-prog?name1=value1-->
This retrieves the output of the cgi program 'cgi-prog' from your web
server, passing 'name1=value1' to the cgi program.
```

```
<!--#CGI https://www.yourstore.com/cgi/secured.cgi-->
This retrieves the output of the cgi program 'secured.cgi' from
'www.yourstore.com' via an SSL connection.
```

```
<!--#CGI /footer.asp-->
This retrieves the output of the asp page 'footer.asp' from your web
server. The web server will execute any asp code in the page.
```

Note: If you execute scripts, embedding their output in a template, using the CGI tag, then please keep in mind that any HTML header information, such as setting cookies, will be ignored by PDG Shopping Cart.

For merchants utilizing the real-time price recalculation on the AddItem templates, the template tag “!--UnitPriceRecalcScript--” now only inserts Javascript for the price recalculation function. If you are utilizing the option lock function, which prevents invalid option selections, you will need to use the tag “!--OPTIONPRICECALCSCRIPT--”. This tag inserts both the price recalculation Javascript and the option lock Javascript. These tags are case sensitive.

The following tags have been added to Service Release 1:

For any template:

!--SHOPSOMEMORE_LINK-- : This adds a ‘Shop Some More’ button to the page.

For the Basket template:

!--CHECKOUT_LINK-- : This adds a ‘Checkout’ button to the page.

!--SECURE_CHECKOUT_LINK-- : This adds a ‘Secure Checkout’ button to the page.

!--REMOVE_ALL_LINK-- : This adds an ‘Empty Basket’ button to the page.

!--RECALC_LINK-- : This adds a ‘Recalculate Totals’ button to the page.

For the Item template and the Custom Basket template:

- !---ORIGINAL_PRICE--- : Displays the original price of the item before any discounting
- !---TEXT_ORIGINAL_PRICE--- : Display the original price of the item before any discounting with the label “Original Price:”.
- !---DISCOUNT_AMOUNT--- : Displays the discounted amount of the item.
- !---TEXT_DISCOUNT_AMOUNT--- : Displays the discounted amount of the item with the label “Discount of:”.
- !---PRCAT--- : Displays the name of the pricing category for the item.
- !---ADD_LINK--- : (Specific to Item template only) Displays the “Add to Cart” button.

For the Checkout template:

- !---SUBMIT_LINK--- : Displays the submit button to send shipping and billing information to PDG Shopping Cart and to proceed with collecting payment information.

For the Verify template:

- !---SUBMIT_LINK---: Displays the submit button to collect payment information and process the order.

For the ShipCompare template, which is used when utilizing USPS Shipping Cost Compare:

- <!---BEGIN_SHIP_COMPARE---> : Denotes the beginning of a repeatable section of the ShipCompare template. This section will then be repeated for each shipping method indicated in the USPS setup section of the Administrator.
- <!---END_SHIP_COMPARE---> : Denotes the end of a repeatable section of the ShipCompare template. This section will then be repeated for each shipping method indicated in the USPS setup section of the Administrator.
- !---SERVICE_NAME--- : Displays the name of the available service. This tag must be located within a BEGIN_SHIP_COMPARE / END_SHIP_COMPARE block.
- !---SERVICE_COST--- : Displays the cost of the service. This tag must be located within a BEGIN_SHIP_COMPARE / END_SHIP_COMPARE block.
- !---SERVICE_DESCRIPTION--- : Displays a brief description of the service. This tag must be located within a BEGIN_SHIP_COMPARE / END_SHIP_COMPARE block.
- !---SERVICE_ERROR--- : If an error occurs while retrieving information for this service, there error would be displayed for this tag. An example might be if a particular service is not available due to an

extreme shipment weight. This tag must be located within a BEGIN_SHIP_COMPARE / END_SHIP_COMPARE block.

!---SERVICE_BUTTON--- : Creates a submit button that allows the customer to choose a service and proceed with checkout.

For the Inventory Error During Verify template:

!---SUBMIT_ORDER_BUTTON--- : Creates a submit button for the order so that the customer can continue ordering what products are in inventory.

The customizable Basket template now has two new tags to facilitate a smooth SSL-secured checkout procedure. “!---SEC_SCRIPTNAME---” can now be used to embed the URL to the secure shopper executable into the web page. The URL to the secure shopper executable is set within the Merchant Administrator. “!---SEC_FORCE_DATA---” is used to pass the cart’s contents and any custom text to the secure server at the beginning of a secure checkout.

You now have the option of PDG Shopping Cart placing an input box on the default Basket template for a pricing category. This only applies if you are using the default basket tag “<!---DISPLAYCART--->” on the Basket template. To utilize this, enter the ‘Discounting’ section of the Merchant Administrator and check ‘Place an input box for Global Price Code on the basket page’. When a customer enters a code for a pricing category on this page, the pricing of all items currently in their basket switches to the pricing available for the pricing category. **Note:** This only changes the items currently in the basket to the pricing category specified by the customer. It will not automatically change new items subsequently added to the basket.

Pricing Categories [?](#)

Place an input box for Global Price Code on the basket page:

Pricing Category Code	Pricing Category Description	Across the Board Discount
wholesale	wholesale	No Across the Board Discount <input type="button" value="Remove"/>

There is now an additional Verify template that can be used if you are tracking inventory on your web store. This template, “VerifyInvError.html”, is specifically used when a customer adds items to their basket that you have in stock, but the items are no longer in stock when they proceed to check out. If this situation occurs, PDG Shopping Cart will modify the customer’s basket to include only the items that are in stock, and displays this template. The customer can then continue with the order, or continue to shop for other products. This template uses the same tags as the Custom Basket template to display information regarding the customer’s updated cart. There is an additional tag, “<!---PRINT_BILLING--->”, that PDG Cart uses to embed the billing information into the page in hidden fields. This allows PDG Cart to proceed with completing the order if the customer chooses to continue.

Payment Service Changes

For those merchants utilizing E-Commerce Exchange, you will now need to use either the Authorize.Net or the VeriSign settings to configure your payment service. If your ECX service uses QuickCommerce, you will need to use the Authorize.Net settings in PDG Shopping Cart. If your login to ECX indicates VeriSign, you will need to use the VeriSign settings in PDG Shopping Cart.

Payment service debug logs can now be encrypted with GPG. To encrypt, import your public key per the instructions the PDG Key Manager documentation. Then place the e-mail address of the public key within less-than greater-than signs (<>) after the name of the log file.

Enable direct Authorize.Net support

Authorize.Net Version:

Authorize.Net account login ID:

Authorize.Net account password:

Authorize.Net Gateway URL:

Authorize.Net authorization type:

Auto-deny orders when Address Verification fails?: Allowed AVS Response Codes:

File to which Authorize.Net transactions are logged:

NOTE: PDG Software recommends that payment service debug logs are only used when first setting up and debugging a payment service's usage with PDG Cart. Once the payment service is confirmed to be working with your web store, you should not create any payment service debug logs. You can prevent this log from being created by leaving the entry blank in the Administrator.

Authorize.Net version 3.1 is now supported, as well as version 3.0. To configure PDG Shopping Cart to use Authorize.Net version 3.1, enter the "Payment Methods", and configure "Authorize.Net". You can then change the "Autho-

Authorize.Net Version” to 3.1, and select “Submit Changes”. Remember that all changes will need to be made live before they take effect on your web store.

Enable direct Authorize.Net support

Authorize.Net Version:	3.1
Authorize.Net account login ID:	pdgtest

If you utilize VeriSign, Authorize.Net, or LinkPoint, you will need to base your Verify template off of the appropriate supplied template. For VeriSign, this template is ‘Verify_VeriSign.html’. For Authorize.Net, this template is ‘Verify_AuthorizeNet.html’. For LinkPoint, this template is ‘Verify_LinkPoint.html’. This template contains fields for additional information, such as CCV2, that may be required by these real-time payment services.

Combill is no longer supported by PDG Shopping Cart.

Order Logging Changes

PDG Shopping Cart can now create ‘comma separated value’ order files that can be directly imported into Quickbooks, Excel, Stamps.com, and many other applications. To activate this, check “Create one line CSV file” in the “Order Settings” of the Merchant Administrator.

The following list defines the which fields of the one line CSV file contain what information:

General info section:

field #1	Invoice number
field #2	Date and time of transaction
field #3	IP address of customer

Billing info section:

field #4	First name
field #5	Last name
field #6	E-mail address
field #7	Bill address1
field #8	Bill address2
field #9	Bill city
field #10	Bill state or province
field #11	Bill country
field #12	Bill zip or postal code
field #13	Bill phone number

Payment info section:

field #14 Payment method (credit or check)
field #15 Description of method for credit - bank name for check
field #16 Card Type for credit - check number for check
field #17 Card Number for credit - bank account number for check
field #18 Card expiration date for credit - bank routing number for check
field #19 Authorization service reference number for credit - NBDSMerchant
ID for check
field #20 Authorization service authorization code for credit - not used for
check
field #21 Authorization service amount charged for credit - not used for
check
field #22 Authorization service AVS code for credit - not used for check

Affiliate info section:

field #23 Affiliate code
field #24 Affiliate expiration date and time

Pass through elements section:

field #25 Pass-through name #1
field #26 Pass-through value #1
field #27 Pass-through name #2
field #28 Pass-through value #2
field #29 Pass-through name #3
field #30 Pass-through value #3

Shipping info section:

field #31 Shipping method
field #32 Ship to name/contact name
field #33 Ship to address1
field #34 Ship to address2
field #35 Ship to city
field #36 Ship to state or province
field #37 Ship to country
field #38 Ship to zip or postal code
field #39 Ship phone number

Order info section:

field #40 Subtotal
field #41 Discount amount
field #42 Sales tax percentage
field #43 Sales tax amount
field #44 Shipping fees
field #45 For single currency Order Total - for multiple currencies pre-flux
order total
field #46 For single currency not used - for multiple currencies Order Total
field #47 Total weight
field #48 Total bonus points

Item info section (These will repeat for each item in the order.):

field #49 Item #1 full sku (key)
field #50 Item #1 quantity

field #51 Item #1 unit price
 field #52 Item #1 extended price
 field #53 Item #1 category description
 field #54 Item #1 unit discount price
 field #55 Item #1 extended discount price
 field #56 Item #1 unit weight
 field #57 Item #1 bonus points
 field #58 Item #1 option #1 value or option #1 description:custom-text string
 (This will repeat for each option of the item.)

This will then repeat with with field #49 through field #58 for each item in the order.

Note that because the number of product options and items differ with each order, the length of the CSV line created will vary. If you will be importing this CSV file into an accounting application or spreadsheet, you must accommodate for the varying file lengths.

Example with '|' as csv seperator:

```
"Kin-00022"|"Fri Aug 24 15:51:12 2001"|100.10.100.10|"Joe"|"Six-
pack"|"jsixpack@yourstore.com"|"123 Main Street"|"Suite B"|"Small-
ville"|"PA"|"~US"|12345-4321|"Credit"|"Offline"|"Visa"|"4111 1111 1111
1111"|"08/01"|||||"phone"|"(201) 555-1212"|||||"Ground Courier"|"Joe Six-
pack"|"123 Main Street"|"Suite B"|"Smallville"|"PA"|"~US"|12345-
4321|$10.00||||$10.00|0.25|"A0001"|1.000|$5.00|$5.00||||0.25|"Blue"|"At
tachment ($5.00 extra)"
```

PDG Shopping Cart's remote logging program, 'shopperlog', is now capable of creating 'comma separated value' order logs as well as standard order logs. It will log appropriate payment service information as well. If you have turned off logging of credit card information in order logs in the Merchant Administrator, then 'shopperlog' will not log this sensitive information.

Changes Regarding Bill-To and Ship-To Countries

The country list that is displayed for the ship-to and bill-to addresses on the CheckOut template is now customizable from within the Merchant Administrator. To modify the country list, enter the 'International' section of the Administrator. Scroll down to the section entitled 'Countries Selection Configuration'.

Countries Selection Configuration [?](#)

Select U.S.P.S. Countries:	<input type="checkbox"/>	Set Country List Based on Service
Select UPS Countries:	<input checked="" type="checkbox"/>	

Modify Displayed Countries:	Edit Country List
Reset Defaults for Displayed Countries:	Set Country List Defaults
Clear Displayed Countries:	Clear (Erase) Country List

There are four configuration commands available. The first one allows you to set your country list to those serviced by a particular shipping company. So, for example, to set your country list to contain all countries to which UPS ships, check 'Select UPS Countries' and then select "Set Country List Based On Service".

The second configuration command, 'Edit Country List', allows you to manually modify your country list. Selecting this command brings up a partial list of all countries recognized by PDG Shopping Cart. You can use the links at the top of the page to modify different portions of the country list. For each country, you may enter a display name for the appropriate country. If you leave the field next to a specific country blank, then that country will not be available for selection by the customer. If there is a 'U' next to the country, then that is a country to which UPS ships. If there is a 'P' next to the country, then that is a country to which USPS ships. Please realize that certain entries may have only 'P' next to them, while UPS may still ship to that destination. This occurs primarily in countries where USPS requires that the 'country' field be a specific entity within that country, while UPS does not. For example, USPS may require that packages destined for Abu Dhabi in the United Arab Emirates be indicated

with ‘Abu Dhabi’ as the country. UPS would need only ‘United Arab Emirates’.

<u>Abu Dhabi (United Arab Emirates) - Borneo (Kalimantan) (Indonesia)</u>	<u>Borneo (North) (Malaysia) - Cyrenaica (Libia)</u>
<u>Cyprus - Gambier (French Polynesia)</u>	<u>Georgia, Republic of - Kampuchea (Cambodia)</u>
<u>Karpathos (Greece) - Manuai (Cook Islands) (New Zealand)</u>	<u>Marie Galante (Guadeloupe) - Norway</u>
<u>Nukahiva (French Polynesia) - Rota</u>	<u>Russia - South Georgia (Falkland Islands)</u>
<u>South Korea (Korea, Republic of) - Turks & Caicos Islands</u>	<u>Tuvalu - Zimbabwe</u>

Abu Dhabi (United Arab Emirates) [P]:	Abu Dhabi (United Arab Emirates)
Admiralty Islands (Papua New Guinea) [P]:	Admiralty Islands (Papua New Guinea)
Afganistan [P]:	Afganistan
Aitutaki (Cook Islands) (New Zealand) [P]:	Aitutaki (Cook Islands) (New Zealand)
Ajman (United Arab Emirates) [P]:	Ajman (United Arab Emirates)
Aland Island (Finland) [P]:	Aland Island (Finland)
Albania [U,P]:	Albania
Alderney, Channel Islands (Great Britain) [P]:	Alderney, Channel Islands (Great Britain)
Algeria [U,P]:	Algeria
Alhucemas (Spain) [P]:	Alhucemas (Spain)

The third configuration command reloads the country list with the default setting, which is to display all countries available for selection from PDG Shopping Cart.

The fourth configuration command will clear the entire list so that no countries will be displayed. This can be useful if you are only allowing shipping to a select few countries. You would clear the list, then manually edit the list to display only the select countries.

