

PDG Software, Inc.



PDG Software, Inc.

Create Database Utility

Installation and User Guide

PDG Software, Inc.

©Copyright 1998, 1999, 2000 PDG Software, Inc.; All rights reserved.

PDG Software, Inc. (“PDG Software”) retains all ownership rights to the software programs (referred to herein as “Software”) offered by PDG Software and related documentation. Use of the Software and related documentation is governed by the license agreement accompanying the Software and applicable copyright law.

THIS DOCUMENTATION IS PROVIDED “AS-IS” WITHOUT WARRANTY OF ANY KIND. IN NO EVENT SHALL PDG SOFTWARE BE LIABLE FOR ANY LOSS OF PROFITS, LOSS OF BUSINESS, LOSS OF USE OR DATA, INTERRUPTION OF BUSINESS, OR FOR INDIRECT, SPECIAL, INCIDENTAL, OR CONSEQUENTIAL DAMAGES OF ANY KIND, ARISING FROM ANY ERROR IN THIS DOCUMENTATION.

PDG Software, Inc.
<http://www.pdgsoft.com>

January, 2000

Contents

CONTENTS	V
CREATE DATABASE UTILITY	1
PREPARING TO USE THE UTILITY.....	2
USING THE UTILITY.....	2
PDGDB.CONF FILE.....	5
ERRORS.....	7
TABLE DEFINITION FILE.....	9
UNIX SAMPLE TABLE DEFINITION FILE USING MYSQL AND PDG AUCTION.	10

Create Database Utility

How to install PDG Software's Create Database Utility

PDG Software has developed a utility to assist customers with creating the database needed for PDG Commerce or PDG Auction to run properly while accessing either MS SQL or UNIX mSQL.

For users, this utility makes it easy to prepare your database to access your PDG product (either PDG Commerce or PDG Auction). You can download the utility directly from PDG Software's Web site at www.pdgsoft.com. Note that the software download is referred to as an "archive."

After decompressing the archive, follow the instructions in the Installation Guide and install the software onto your server. Note the locations of the following files:

- createdb.exe - located within the cgi-bin directory
- pdgdb.conf - located within the cgi-bin directory
- table.def - located within the PDG_Auction directory

For individual web servers, createdb.exe and pdgdb.conf should be installed in the *content/cgi-bin* directory where *content* is the root web's content directory.

Note that the name of the cgi directory may differ, depending on server platform such as NT or UNIX, e.g. the directory name might be, cgi, cgibin, cgilocal, or cgi-bin.

Note that for the NT platform SQL server 6.5/7.0 is required for database support and for the UNIX platform, mSQL is required for database support.

The table.def file should be installed into your web's PDG product sub directory (either PDG Commerce or PDG Auction).

Preparing to use the utility

Before using the utility, you must have completed the following:

1. Installed the PDG product (either PDG Auction or PDG Commerce) according to the product's installation guide. See your User Guide and Installation Guide for details.
2. Placed all files in their web directories and set permissions as per the instruction manual for the product.
3. Modified the password in the pdgdb.conf file. (Optional – initially set to LETMEIN.)

Using the Utility

Follow the instructions below to create the database.

1. Establish your connection to the internet and open your web browser.
2. Type the following in the address bar changing mystore.com to your web's address, then hit the "Enter" key:

<http://www.mystore.com/cgi-bin/createdb?password=LETMEIN>

Make sure the name of the cgi directory is correct, and for Windows platforms, add ".exe" after "createdb".

PDG SQL Database Setup - Microsoft Internet Explorer

Address: <http://dell/cgi-bin/createdb.exe?password=LETMEIN>

PDG
PDG SOFTWARE Inc.

PDG Database Setup Page

New Password:

New Password (Confirm):

Data Source Name (DSN):

SQL db User Name:

SQL Password:

SQL Host: (Unix only)

PDG Auction
 PDG Commerce

New Password - This is the access password to the program. It can be changed with any text editor prior to execution. The default password provided is LETMEIN. This value is case sensitive on all platforms.

1. Enter a new password for accessing this application (if required). It must be entered twice for confirmation. The program will fill in the values with the current password.
2. Fill in the edit boxes for accessing the SQL database with the information provided by your ISP.

Data Source – This is the Data Source Name (NT platforms) or Database (Unix platforms). The user can specify any name, but the Data Source is required to be designated/allocated prior to running this program.

- a. Enter the name of the Data Source established on your ISP.

SQL User Name – If the ISP requires the user to access the Data Source with a user name/password pair, enter the user name here. This is used for the NT platforms running SQL Server where anonymous access to the database is not authorized by the ISP. Unix platforms access the database based on the owner of the executable file, therefore this variable is not utilized for Unix functionality.

- b. Enter the SQL User Name the program will use to access the database (if required). Most ISP's will not allow anonymous access to the SQL database.

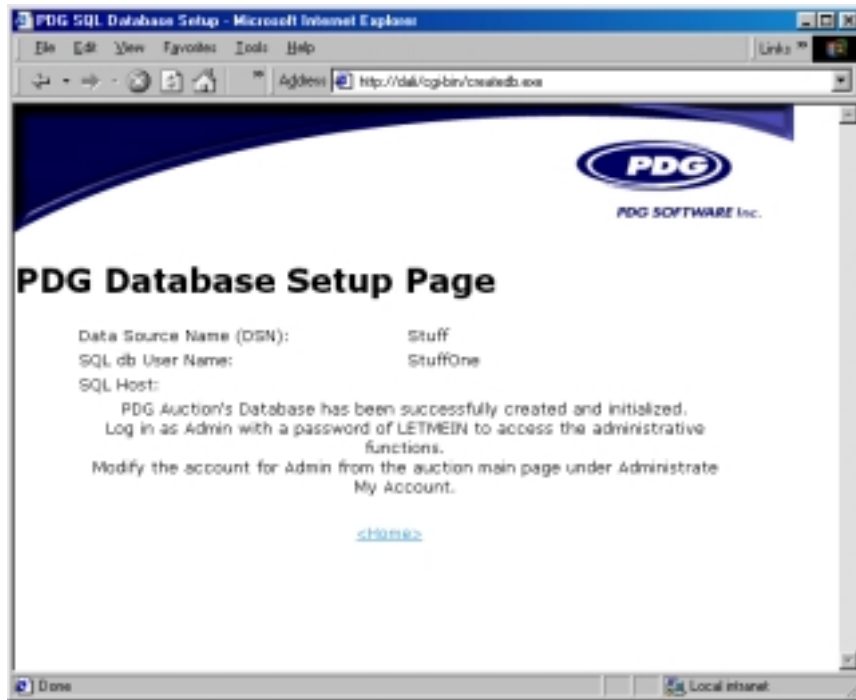
SQL Password – Used for NT platforms running SQL Server where anonymous access to the database is not authorized by the ISP.

- c. Enter the password the program will use to access the database (required of a user name is being used).

SQL Host – Used for Unix platforms to designate the SQL server name or IP address to be accessed. If the SQL server is running on the local machine leave this field blank to allow Unix sockets vice TCP/IP protocols (this will improve performance) for communication with SQL server.

- d. Enter the SQL Host name by either IP address or URL name (Unix only). If the SQL host is on the machine hosting your web site leave this field blank. Designating the IP address or URL of the host will force the SQL program to use TCP/IP communications with the program vice Unix sockets (this will result in an unnecessary performance degradation).
3. Select the PDG Product for which you are creating the database.
 4. Click on the submit button to commence database creation.

If the database is created successfully, a screen similar to the one below will appear.



If the database is NOT created successfully, an error message will appear. Correct the error and recreate the database.

 End

Pdgdb.conf File

The configuration file is as made up of [key]=[value] pairs. The default file has null values for all but the Debug_Level and password keys. These values will be obtained from the initialization screen and will be written to file before commencing to create the tables. This will allow recreation, if required, without reentering the data. The default file is shown below.

```
;PDGdb.conf
;Autogenerated by PDG CreateDB
;
Password=LETMEIN
DSN=
SQL_UserName=
SQL_Password=
SQL_Host=
Debug_Level=3
```


Errors

If an error occurs during the create database process, a screen will be displayed notifying the user of the error. Typical errors are listed below.

Error	Error message
1 – Unknown	An unknown error has occurred.
2 – Invalid Action	An invalid action was submitted. Please notify the webmaster of this error and the page which caused it.
3 – CGI Error	An unknown CGI error has occurred. Please notify the webmaster of this error and the page which caused it.
4 – Bad Password	Invalid password entered. Access forbidden.
5 – Corrupt Data File	A corrupt data file exists. Please reload the pdgdb.conf file into your cgi-bin directory.
6 – Initializing Table	An error occurred while initializing a table in the database. Please delete all tables and run this program again.
7 – No DSN	A Data Source Name must be provided. Please rerun the create database routine.
8 – No User Name	A User Name to access the SQL database is required. Please rerun the create database routine.
9 – No Connect	Unable to connect to the specified SQL Database. Please ensure the Data Source name and user name (if required) are correct.
10 – File Not Open	Unable to open file. Please try again.
11 – Bad Program	You need to specify the program you want the tables loaded for.
12 – No Index	An error occurred while reading the table.def file. Reload the table.def file and recreate the database.
13 – Password No Match	The submitted passwords do not match.

Table Definition File

The table definition file format is described below.

Section A –	Product name ending with a new line character.
Section B.1 –	One line list of tables to be generated. Separate each with a blank space and end with a new line character.
Section B.2 –	Number of lines each table create statement requires separated by a non-digit character. A new line follows the last digit.
Section B.3 –	Column name portion of statement (i.e. ID INTEGER NOT NULL PRIMARY KEY,). Include the comma separator unless it is the last line.
Section C.1 –	One line list of tables requiring indices and sequence variables. Separate each table with a blank space and end with a new line character.
Section C.2 –	Number of lines each table index statement requires separated by a non-digit character. A new line follows the last digit.
Section C.3 –	Leading character identifies if it will be a unique index value. Insert a space before the index name and follow it with the column to be indexed (i.e. Y idx_pri ID).
Section D.1 –	One line list of tables that require initialization with data. Separate each with a blank space and end with a new line character.
Section D.2 –	One line list of each field requiring initialization followed by a separate line containing the values to be placed in each field.

Notes:

The NT platform table definition file does not require section C and no blank lines should be in between sections B and D.

Sequence statement data is not required to be entered in the table definition file, as it is hard coded according to the database software being used.

UNIX Sample Table Definition File using mSQL and PDG Auction.

	Section
Auction	A
Customer Category Payment Shipping Item Bid	B.1
25!3!5!5!15!10	B.2
ID UINT NOT NULL, FirstName CHAR(50), LastName CHAR(50), UserID CHAR(50), Company CHAR(50), Phone CHAR(25), BillStreet1 CHAR(50), BillStreet2 CHAR(50), BillCity CHAR(25), BillState CHAR(25), BillZip CHAR(25), BillCountry CHAR(5), ShipStreet1 CHAR(50), ShipStreet2 CHAR(50), ShipCity CHAR(25), ShipState CHAR(25), ShipZip CHAR(25), ShipCountry CHAR(5), CC_Number CHAR(25), CC_Exp CHAR(10), Password CHAR(15), Email CHAR(50), Security UINT, Tax_rate REAL, ShipMethod CHAR(50) ID UINT NOT NULL, Description CHAR(255), ParentID UINT ID UINT NOT NULL, Description CHAR(50), Type UINT, Service UINT, Conx UINT ID UINT NOT NULL, Method CHAR(50), PriceChange REAL, flags UINT, UPSTOS CHAR(8) ID UINT NOT NULL, Description CHAR(50), Quantity UINT, MinimumBid MONEY, BidUnit UINT, AuctionStart UINT, AuctionEnd UINT, SupplierID UINT, CategoryID UINT, ImageURL CHAR(50), Specs CHAR(50), Status UINT, Weight REAL, PayMethod UINT, ShipMethod UINT ID UINT NOT NULL, ItemID UINT,	B.3

CustomerID UINT, Quantity UINT, Bid MONEY, AutoBid MONEY, SubmitAt UINT, ShipMethod CHAR(50), PayMethod CHAR(50), Extrainfo CHAR(60)	
Customer Category Payment Shipping Item Bid	C.1
1!1!1!1!1!1	C.2
Y idx_pri ID Y idx_pri ID Y idx_pri ID Y idx_pri ID Y idx_pri ID Y idx_pri ID	C.3
Customer	D.1
ID, FirstName, UserID, BillCountry, Password, Email, Security 1, 'Admin', 'Admin', '~US', 'LETMEIN', 'siteadmin@yoursite.com', 255	D.2