
PDG Software

*Microsoft FrontPage Component
Installation and User Guide*

**PDG Software, Inc.
1751 Montreal Circle, Suite B
Tucker, Georgia 30084-6802**

Copyright ©1998 - 2002 PDG Software, Inc.; All rights reserved.

PDG Software, Inc. ("PDG Software") retains all ownership rights to the software programs (referred to herein as "Software") offered by PDG Software and related documentation. Use of the Software and related documentation is governed by the license agreement accompanying the Software and applicable copyright law.

THIS DOCUMENTATION IS PROVIDED "AS-IS" WITHOUT WARRANTY OF ANY KIND. IN NO EVENT SHALL PDG SOFTWARE BE LIABLE FOR ANY LOSS OF PROFITS, LOSS OF BUSINESS, LOSS OF USE OR DATA, INTERRUPTION OF BUSINESS, OR FOR INDIRECT, SPECIAL, INCIDENTAL, OR CONSEQUENTIAL DAMAGES OF ANY KIND, ARISING FROM ANY ERROR IN THIS DOCUMENTATION.

PDG Software, Inc.
<http://www.pdgsoft.com>

January, 2002

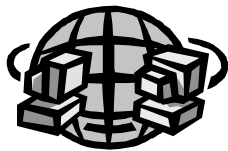
Contents

Chapter 1	Installing the Component	7
Online vs. Local Installation.....		7
Online Editing.....		7
Local Editing.....		8
Installing the Components Online		8
Installing the Component Locally.....		9
Chapter 2	Activating the Component	11
Chapter 3	Using the Component	13
Properties of the 'PDG Cart Action' Component.....		14
URL of Executable		15
Select Action.....		15
Additional CGI Variables		18
Product SKU		18
Select Link Type.....		18
Properties of the 'PDG Cart Action - Hover Button' Component.....		19
URL of Executable		19
Select Action.....		20
Additional CGI Variables		22
Product SKU		22
Image		22
Hover Image		22
Dimensions in Pixels		22
Check if you are using FrontPage 2000.....		22

Installing the Component

How to install PDG Software's Component for Microsoft FrontPage

For those Web stores developed with FrontPage (2002, 2000, or 98), PDG Software's FrontPage Component makes it easier than ever before to integrate PDG Shopping Cart functionality into a FrontPage Web store. You can download the component directly from PDG Software's Web site at www.pdgsoft.com.



Online vs. Local Installation

There are two ways in which you may use this component, depending upon how you currently edit your Web site with FrontPage - online or locally. Regardless of how you edit your Web pages, you must use a webserver. If you edit your pages locally, you must have a web server, such as IIS for Windows 2000, or Microsoft Personal Web Server for Windows 9x.

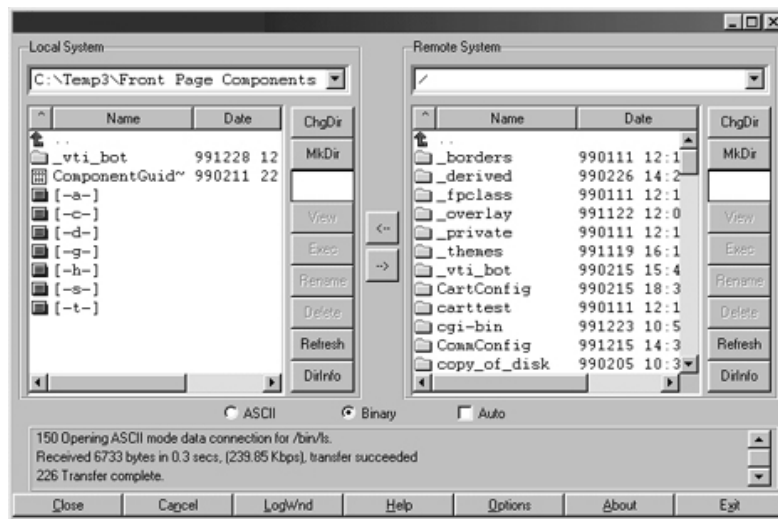
Online Editing

If you use FrontPage to open your site directly from the host server and create and edit pages, then you should install the component on your site's host server. Remember, that if you use FrontPage in this manner, you will need to install the component on the host server in each website where you intend to use PDG Commerce or PDG Cart. See the section entitled 'Installing the Components Online' for instructions.

Local Editing

If you use FrontPage to create and edit your Web pages locally (off-line) and then publish the changes afterwards, then you should install the component in your local PC's root web. See the section entitled 'Installing the Component Locally' for instructions. Remember that even with local editing, a web server is required. You can run Microsoft IIS on Windows 2000 machines, and Microsoft Personal Web Server on Windows 9x machines.

Installing the Components Online



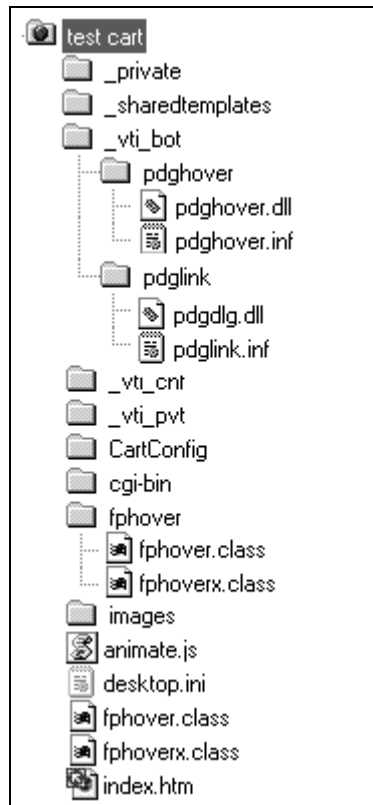
You will need to follow the instructions below and install the component online into each site that will utilize PDG Commerce or PDG Cart:

1. Close FrontPage Explorer and Editor if they are running.
2. Using a file transfer utility, such as FTP (do not use FrontPage Explorer), connect to your Web site and locate the root document directory. This is the directory where your main HTML pages (such as 'index.html' or 'default.htm') are located. Within this directory, you should see a folder or directory called '_vti_bot.' If you do not, you should create one. You may also see other FrontPage support folders or directories such as '_vti_bin,' '_vti_cnf,' '_vti_log' and '_vti_txt.'
3. Transfer the 'pdglink' and 'pdghover' folders from the archive (located within the '_vti_bot' folder of the archive) that you downloaded into the '_vti_bot' folder in your site's root document directory. If your file transfer utility allows you to specify "binary" as the transfer mode, do so. Transfer the contents just as they are - two folders (or directories, 'pdghover' and 'pdglink') with their contents.
4. Transfer the 'fphover.class' and the 'fphoverx.class' files into the root document directory and into a folder called 'fphover' on your website. These two files should be located in both places on your website - both in the 'fphover' folder and in the root document directory. The 'fphover' folder will be located inside your root document directory. If this folder does not exist, please create it.
5. Activate the components according to the instructions in the section titled 'Activating the Component.'

Installing the Component Locally

To install the component onto your local computer, follow these instructions:

1. Close FrontPage Explorer and Editor if they are running.
2. Using Windows Explorer (not FrontPage Explorer), locate the root web directory on your PC. For reference, the main root web is usually designated as c:\Web-share\wwwroot, but this may or may not be the case with your particular configuration.



3. In that root web, you should see a directory called ‘_vti_bot.’ If not, you should create one. You may also see other FrontPage support folders or directories such as ‘_vti_bin,’ ‘_vti_cnf,’ ‘_vti_log’ and ‘_vti_txt.’
4. Copy the ‘pdglink’ and ‘pdghover’ folders from the archive (located within the ‘_vti_bot’ folder of the archive) that you downloaded into the ‘_vti_bot’ folder in your site’s root document directory. Copy the contents just as they are - two folders (or directories, ‘pdghover’ and ‘pdglink’) with their contents.
5. Copy the ‘fphover.class’ and the ‘fphoverx.class’ files into the root document directory and into a folder called ‘fphover’ on your website. These two files should be located in both places on your website - both in the ‘fphover’ folder and in the root document directory. The ‘fphover’ folder will be located inside your root document directory. If this folder does not exist, please create it.
6. Activate the components according to the instructions in the section titled ‘Activating the Component.’

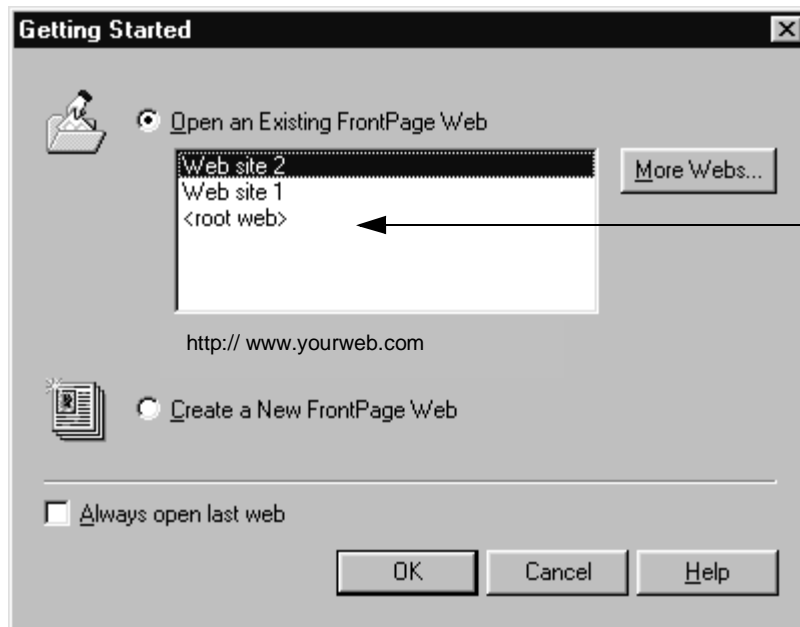
 *End*

Activating the Component

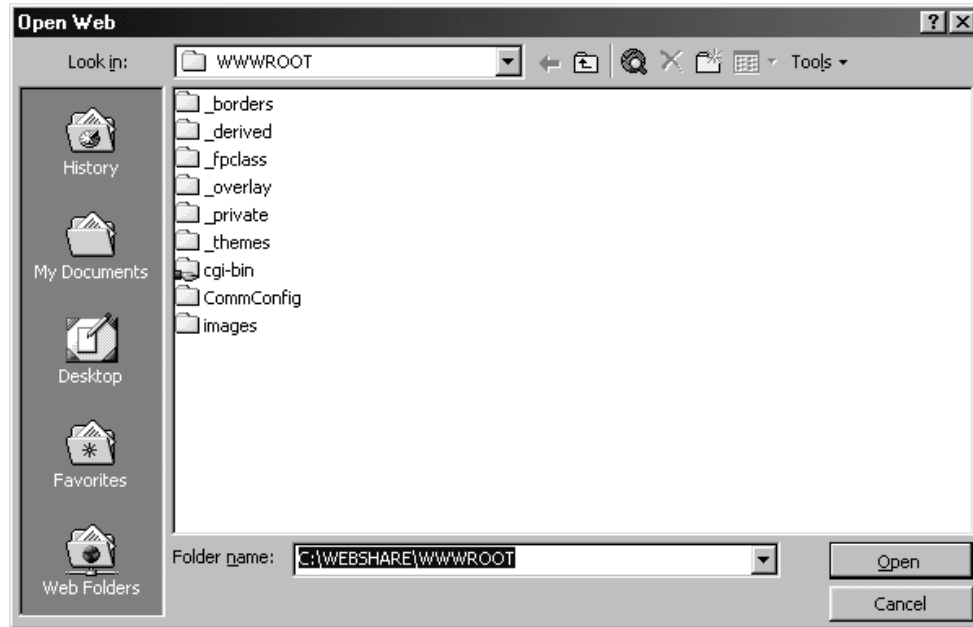
How to activate PDG Software's Component for Microsoft FrontPage

The component for FrontPage must be activated once it has been installed. To do so, follow these instructions:

1. Open FrontPage Explorer.
2. From within FrontPage Explorer, if you installed the component online, then open the Web site in which it was installed. If you installed the components locally, then open your computer's main root Web. For reference, the main root Web is usually designated as '<Root Web>' in the Getting Started dialog box when starting FrontPage 98, or WWWROOT in FrontPage 2000.



FrontPage 98 - This computer's main root web



FrontPage 2000 – This computer's main root web.

After opening the web,

3. From the Tools menu, select 'Recalculate Hyperlinks.'
4. When prompted, proceed with the recalculation by selecting 'Yes.' At this point, the component should now be activated. However, it may be necessary to reboot your computer to complete the activation process. If this is the case, reboot your computer and continue.

 End

Using the Component

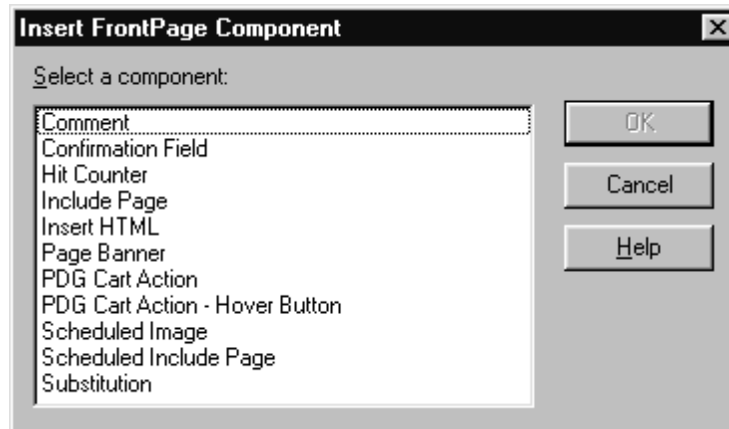
How to use PDG Software's Component for Microsoft FrontPage

When developing your Web store with FrontPage, you can use the FrontPage Component to create links to the shopping cart itself.

These links are instructions which tell the cart program to perform a specific task, e.g. add an item to the shopping cart, view the contents of the shopping cart or proceed to checkout. To insert a component into a Web page:

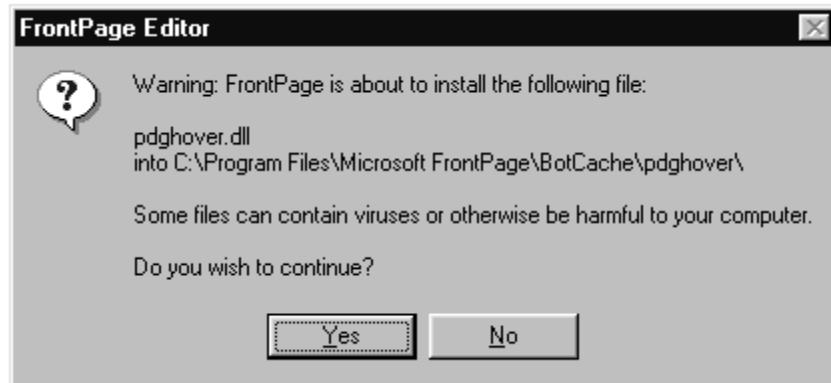
1. Load the Web page in the FrontPage Editor.
2. Place the cursor at the location where you want the component to be added.
3. From the 'Insert' menu on the toolbar, select 'FrontPage Component' (for FrontPage 2000 users, also select 'Additional Components')

A dialog box similar to the one below should appear:



4. Choose 'PDG Cart Action' if you wish to insert a text or image link to PDG Shopping Cart. Choose 'PDG Cart Action - Hover Button' if you wish to insert a FrontPage hover button that links to the Cart.

If this is the first time you are using a PDG Shopping Cart component, the following dialog box may appear:

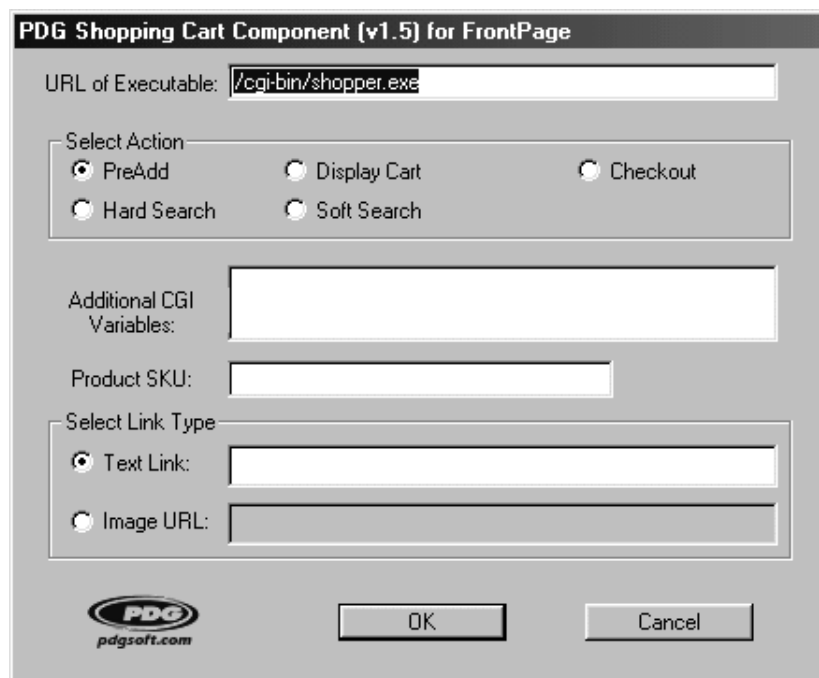


This particular warning concerns the first time use of the hover button component. The first time you use the other component, named 'PDG Cart Action,' you may get a similar warning.

This is a normal occurrence. Click 'Yes.' This message should not appear again.

Properties of the 'PDG Cart Action' Component

After choosing the 'PDG Cart Action' component, and when viewing the properties of this component, the following dialog box will appear.



URL of Executable

This entry contains the URL of the executable - the executable file which runs the shopping cart.

Note:

- If you are using PDG Shopping Cart for NT server Web sites, this is typically '/cgi-bin/Shopper.exe' - where cgi-bin is the designation of the CGI directory where your shopping cart executables reside.
- If you are using PDG Commerce for NT server Web sites, this is typically '/cgi-bin/Commerce.exe' - where cgi-bin is the designation of the CGI directory where your shopping cart executables reside.
- If you are using PDG Mall for NT server Web sites, this is typically '/cgi-bin/Mshopper.exe' - where cgi-bin is the designation of the CGI directory where your shopping cart executables reside.

Keep in mind that your cart's executables may reside in a CGI directory with a different name, such as 'cgi-local,' 'cgibin' or 'cgi.' So, you should verify the actual name of the CGI directory.

For sites located on UNIX servers, this may be '/cgi-bin/shopper' or '/cgi-bin/shopper.cgi' - again with the same caution about the name of the CGI directory as noted previously.

PDG Cart Action component will remember the last entered value for this field, eliminating the need to re-enter the value again.

Select Action

This entry tells the cart what action to perform.

PreAdd - If you would like the cart to generate a catalog page for a specific item, choose 'PreAdd.' As explained in the User Guide, this catalog page is the page which allows a customer to specify the quantity and options of the product they wish to place in the shopping cart.

Display Cart Contents - If you want the cart to display the contents of the customer's shopping cart, select 'Display Cart Contents.'

Checkout - If the action should begin the checkout process, select 'Checkout.'

Hard Search - If the action should display the hard search option, select 'Hard Search.'

If you are going to give customers the ability to search for products, you must embed a call (a button, graphic, text link or blank field) that will "invoke" the search function.

This call can be located anywhere within your Web store that you deem appropriate, e.g. on your home page, on an internal page, or all of your pages.

A hard search is a link (button, graphic or text) that conducts a pre-determined search - a search of the product database according to fixed criteria (keywords). For example, you might create a hard search for all “country music CDs” or all “accounting textbooks.”

You might ask why a store would have a hard search. One reason might be related to site maintenance. Consider Web stores you have visited. You may recall that many of them have pages upon pages of images and text that present the products they offer for sale. Assuming that those pages are statically created - meaning that someone actually created the page manually using some HTML editor - then, each time a product is added to or subtracted from the product offering, those pages have to be updated and re-published to the Web.

With the hard search function enabled, the cart can create those pages dynamically either in the Thumbnail format or the Catalog Page format.

For example, without the search function, a customer might click a button labeled “Accounting Textbooks” and it would take them to a statically created page presenting all of the accounting textbooks - perhaps in thumbnail format.

By coding that button as a “hard search,” the cart would then display all products that are accounting textbooks as search matches and present them on a Thumbnail or Catalog formatted search results page. Actually, the customer would have no idea that a “search” had taken place. Because you can customize the search results templates, customers would not know whether the page was dynamically created or statically created.

The effect is that only the product databases need to be maintained and not both the database and the static page showing accounting textbooks. As new accounting textbooks are added to the product database, they would be set up to match the search invoked by the button coded as the “accounting textbook hard search.”

PDG Shopping Cart Component (v1.5) for FrontPage

URL of Executable:

Select Action

PreAdd Display Cart Checkout

Hard Search Soft Search


Additional CGI Variables:

Keywords:

Select Link Type

Text Link:

Image URL:



Soft Search - If the action should display the soft search option, select 'Soft Search.'

A soft search is one that would allow a visitor to your Web store to enter keywords into blank field (text box) and click a button to begin the search according to the keywords entered.

PDG Shopping Cart Component (v1.5) for FrontPage

URL of Executable:

Select Action

PreAdd Display Cart Checkout

Hard Search **Soft Search**


Additional CGI Variables:

Keywords:

Select Link Type

Text Link:

Image URL:



Additional CGI Variables

This box allows you to specify additional information such as price codes, templates, or if you are using PDG Mall, Store ID.

For example, if you are embedding a product that has a pricing category of GOVT, the entry should be in the format of &pricecode=GOVT.

Product SKU

If the action is set to PreAdd, type the SKU of the product you are currently linking to and for which a catalog page is generated. If any other action is selected, this field will be inactive.

*Note that if you select either **Hard Search** or **Soft Search**, this field name changes to “**Keywords**” so that you can enter a keyword for the search.*

Select Link Type

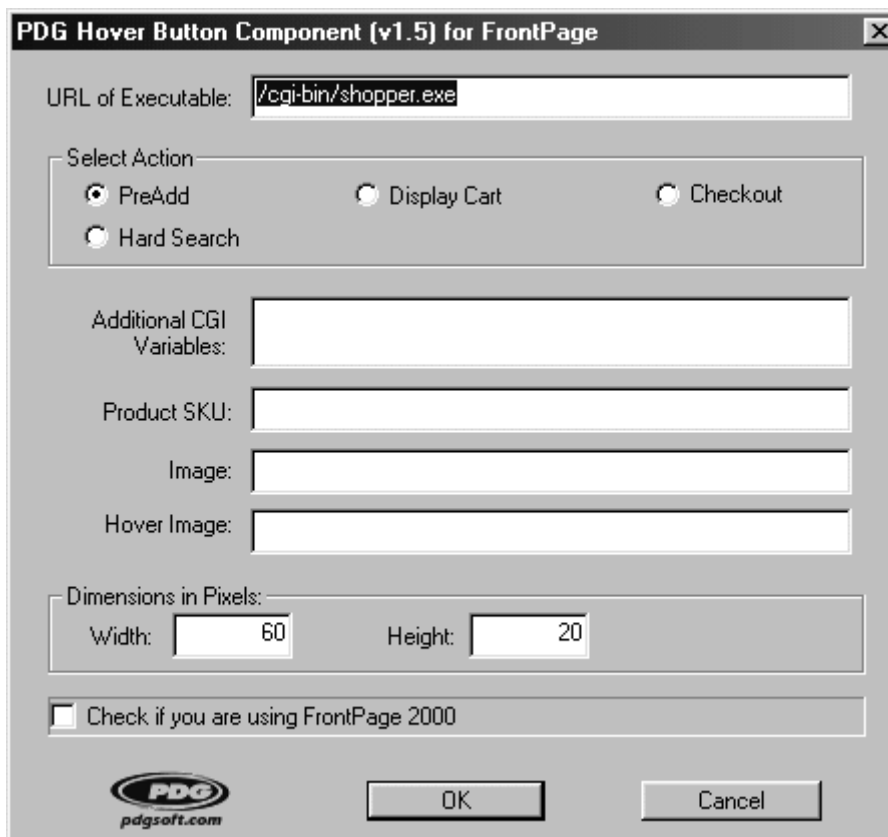
In this section of the component properties, determine how the link is to be displayed on the Web page. If you would like a textual link, select ‘Text Link’ and type in the text to link in the corresponding entry field.

If you would like an image (a button or picture, for example) to appear as the link, select ‘Image Link’ and enter the URL of the image file in the corresponding entry field.

Properties of the 'PDG Cart Action - Hover Button' Component

By using this component, your link to PDG Shopping Cart will be a "hover button." This is a button that changes states when a mouse rolls over the button - also known as a "mouse-over" event.

After choosing a 'PDG Cart Action - Hover Button' component, and whenever viewing the properties of this component, you will see the following dialog box:



The dialog box is titled "PDG Hover Button Component (v1.5) for FrontPage". It contains the following fields and controls:

- URL of Executable:
- Select Action:
 - PreAdd
 - Display Cart
 - Checkout
 - Hard Search
- Additional CGI Variables:
- Product SKU:
- Image:
- Hover Image:
- Dimensions in Pixels:
 - Width:
 - Height:
- Check if you are using FrontPage 2000

At the bottom, there is a PDG logo with the URL pdgsoft.com, and two buttons: OK and Cancel.

URL of Executable

This entry contains the URL of the executable - the executable file which runs the shopping cart.

Note:

- If you are using PDG Shopping Cart for NT server Web sites, this is typically '/cgi-bin/Shopper.exe' - where cgi-bin is the designation of the CGI directory where your shopping cart executables reside.
- If you are using PDG Commerce for NT server Web sites, this is typically '/cgi-bin/Commerce.exe' - where cgi-bin is the designation of the CGI directory where your shopping cart executables reside.

- If you are using PDG Mall for NT server Web sites, this is typically '/cgi-bin/Mshopper.exe' - where cgi-bin is the designation of the CGI directory where your shopping cart executables reside.

Keep in mind that your cart's executables may reside in a CGI directory with a different name, such as 'cgi-local,' 'cgibin' or 'cgi.' So, you should verify the actual name of the CGI directory.

Select Action

This entry tells PDG Shopping Cart what action to perform.

PreAdd - If you would like PDG Shopping Cart to generate a catalog page for a specific item, choose 'PreAdd.' As explained in the cart's User Guide, the catalog page is the page which allows a customer to specify the quantity and options of the product they wish to place in the shopping cart.

Display Cart Contents - If you would like PDG Shopping Cart to display the contents of the customer's shopping cart, select 'Display Cart Contents.'

Checkout - If the action should begin the checkout process, select 'Checkout.'

Hard Search - If the action should display the hard search option, select 'Hard Search.'

If you are going to give customers the ability to search for products, you must embed a call (a button, graphic, text link or blank field) that will "invoke" the search function.

This call can be located anywhere within your Web store that you deem appropriate, e.g. on their your home page, on an internal page, or all of your pages.

A hard search is a link (button, graphic or text) that conducts a pre-determined search - a search of the product database according to fixed criteria (keywords). For example, you might create a hard search for all "country music CDs" or all "accounting textbooks."

You might ask why a store would have a hard search. One reason might be related to site maintenance. Consider the Web stores you have visited. You may recall that many of them have multiple pages of images and text that present the products they offer for sale. Assuming that those pages are statically created - meaning that someone actually created the page manually using some HTML editor - then, each time a product is added to or subtracted from the product offering, those pages have to be updated and re-published to the Web.

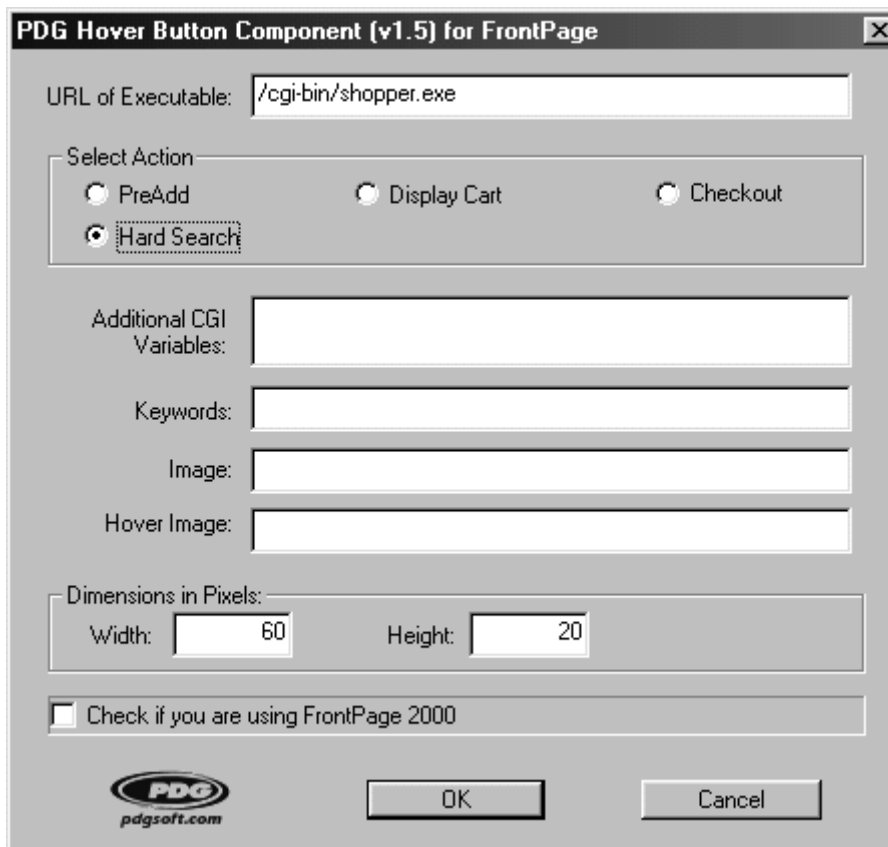
With the hard search function enabled, the cart can create those pages dynamically either in the Thumbnail format or the Catalog Page format.

For example, without the search function, a customer might click a button labeled “Accounting Textbooks” and it would take them to a statically created page presenting all of the accounting textbooks - perhaps in thumbnail format.

By coding that button as a “hard search,” the cart would then display all products that are accounting textbooks as search matches and present them on a Thumbnail or Catalog formatted search results page. Actually, the customer would have no idea that a “search” had taken place. Because you can customize the search results templates, customers would not know whether the page was dynamically created or statically created.

The effect is that only the product databases need to be maintained and not both the database and the static page showing accounting textbooks. As new accounting textbooks are added to the product database, they would be set up to match the search invoked by the button coded as the “accounting textbook hard search.”

PDG Hover Button component will remember the last entered value for this field, eliminating the need to re-enter the value again.



Note that the Soft Search option is not available when using the PDG hover button component.

Additional CGI Variables

This box allows you to specify additional information such as price codes, templates, or if you are using PDG Mall, Store ID.

For example, if you are embedding a product that has a pricing category of GOVT, the entry should be in the format of `&pricecode=GOVT`.

Product SKU

If the action is set to PreAdd, type the SKU of the product you are currently linking to and for which a catalog page is generated. If any other action is selected, this field will be inactive.

Note that if you select either Hard Search or Soft Search, this field name changes to “Keywords” so that you can enter a keyword for the search.

Image

This entry contains the URL of the normal image of the button when the mouse pointer is not hovering over the button. This image must have the same dimensions as the ‘Hover Image.’

Hover Image

This entry contains the URL of the image of the button when the mouse pointer is hovering over the button. This image must have the same dimensions as the regular ‘Image.’

Dimensions in Pixels

In this section of the component properties, you must enter the width and height in pixels of the two images. Because both images must have the same dimensions, it does not matter that there are fields for only one set of dimensions.

Check if you are using FrontPage 2000

If you are using FrontPage 2000 to design your web pages you **MUST** check this box in order for the component to differentiate between FrontPage 98 and FrontPage 2000.

