



PDG SHOPPING CART

PDG Software, Inc.

PDG Import Tool

Version 1.2

USER GUIDE

Note: This guide assumes that you are familiar with the 'Products' section of the PDG Shopping Cart Administrator. If you not familiar with adding and removing product from your Shopping Cart, please read Chapter 5 of the PDG Shopping Cart User Guide before continuing. This guide also assumes that you are somewhat familiar with using a database or spreadsheet application for storing and managing your products.

OVERVIEW

The PDG Import tool is a utility that allows you to conveniently enter a large number of products into your PDG Shopping Cart. It accomplishes this by converting comma-delimited file, exported from a database or spreadsheet, into a product database file used by the Shopping Cart. The overall process consists of, first, creating a comma-delimited file containing your products with your database/spreadsheet application. Please consult your database/spreadsheet application documentation if necessary. Next, the Import Tool will convert this to a product database file, which you will upload to your web store's PDG_Cart directory.

Step 1: DATABASE EXPORT

Export your current product database/spreadsheet to a **comma-delimited ASCII file** using the following fields:

Field #	Name	Data Type	Comments	Field Width (characters)
1	SKU (Product Code)	Text		20
2	Description	Text		255
3	Keywords	Text	Read <u>Field Comments</u> below.	255
4	Unit price	Numeric		N/A
5	Taxable price	Numeric		N/A
6	Additional Shipping	Numeric		N/A
7	Weight	Numeric		N/A
8	Unit of Measure	Text		255

9	Frequent Shopper Points	Numeric		N/A
10	# Items per box	Numeric		N/A
11	Allow Fractional Qty?	Text or Numeric	Y or 1 for yes, N or 0 for no	3
12	Keep Inventory?	Text or Numeric	Y or 1 for yes, N or 0 for no	3
13	Image Type	Text	.gif, .jpg, .jpeg, etc.	5
14	Image URL	Text	Read <u>Field Comments</u> below.	255
15	Thumb Image URL	Text	Read <u>Field Comments</u> below.	255
16	Item Template	Text	Read <u>Field Comments</u> below.	255
17	Soft Goods Data	Text		255
18	Specific Product Text	Text	Read <u>Field Comments</u> below.	1024
19	Price Category Code	Text		20
20	Price Category Unit price	Numeric		N/A
21	Price Category Taxable price	Numeric		N/A

Field Comments

1. SKU (Product Code)

This field must be unique for each product. This field is limited to 20 characters.

13. Image Type

Image type extension for product image and product thumbnail image URLs. (gif, jpg, jpeg, etc). If you are using the 'product sku number' naming convention for images, this field should contain the "extension" (gif, jpg, jpeg, etc) *only* of the image's file name. This extension will be applied to Image URL and Thumb URL if necessary.

14. Image URL

This is the URL location of the image file that will accompany the product's information on the Add Item page.

(Example: <http://www.yourdomain.com/images/gadget.jpg> or "/images/gadget.jpg")

If your product image files are named using the 'product sku number' convention (A0001.gif or A0002.jpg), then you need only to include the URL of the directory where the image will be located in this field. (Example: <http://www.yourdomain.com/images/> or "/images/").

As a result, the tool will append the Image Type suffix to the product sku to create the file name. When using this convention, you must include the trailing forward slash (/) with the directory name. This is how the Import Tool distinguishes a URL of a directory from a full URL.

Otherwise, if you used another naming convention, this field should contain the full URL to the image.

15. Thumb Image URL

This is the URL location of the thumbnail image file that will accompany the product's information on a Search Results page.

(Example: <http://www.yourdomain.com/images/thumbnail.jpg> or "/images/[thumbnail.jpg](#)")

As with the Image URL, if your product thumbnail image files are named using the 'product sku number' convention (thumbA0001.gif or thumbA0002.jpg), then you need only to include the URL of the directory where the image will be located in this field.

(Example: <http://www.yourdomain.com/images/> or "/images/").

As a result, the Import Tool will create a file name that consists of the prefix "thumb", followed by the product sku, followed by the Image Type suffix.

(Example: thumbA0001.gif)

When using this convention, you must include the trailing forward slash (/) with the directory name. This is how the Import Tool distinguishes a URL of a directory from a full URL.

16. Item Template

This is the location of the template to be used in place of the Add Item template, if you will be using a custom template for this product. By omitting the leading slash (\ or /), the Tool will interpret this location as being relative to the PDG_Cart directory. Storing all template directories inside your PDG_Cart directory and using this convention is recommended.

(Example: Templates\sample-item.html or Templates/sample-item.html)

Note: If your web store is running on a Windows NT server, then you must use the backslash (\) in the disk location. If your web store is running on a Unix server, then you must use the forward slash (/). You may contact your ISP to obtain this information.

18. Specific Product Text

In this field, you must provide Specific Product Text data using the following format:

The name of the directory to store this data should appear first in this field. You will need to create a folder within the PDGTools directory on your local machine with this same name. When you create a directory for this, the default path is C:/PDGTools. Omitting the leading slash (\ or /) from the directory name, will cause the Import Tool to interpret this location as being relative to the PDG_Cart directory. The Specific Product Text directory will be stored inside your PDG_Cart directory. This is what is recommended. A slash (\ or /) should follow the directory name then the Specific Product Text data.

(Example: "ProdText\This product is of high quality.")

It is recommended that you use the default "ProdText\" directory. The Import Tool will create and temporarily store this data in a text file named "[PRODUCT SKU].txt" that will be located in the C:\PDGTools directory.

Note: Also, if your web store is running on a Windows NT server, then you must use the backslash (\) in the disk location. If your web store is running on a Unix server, then you must use the forward slash (/). You may contact your ISP to obtain this information.

Note: This field cannot contain any and carriage returns or line feeds. If any type of formatting is desired, you use html tags. You can include a maximum of 1024 characters in this field.

Formatting Notes:

If any field has no applicable information, you should enter an asterisk (*) to denote a blank field. If a field calls for an entry that has a comma (,) or double quotes ("), then enclose the contents in single (') or double (") quotes. For example, if your product description field contains Murder, She Wrote, or 2" Trailer Hitch, then your comma delimited field would be formatted in this manner:

..., "Murder, She Wrote", ... or ..., "2" Trailer Hitch", ...

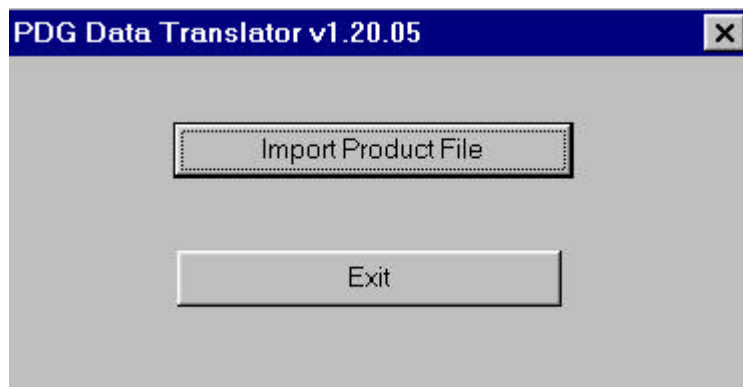
If possible, you should not export the “headers” in this file. Otherwise, the utility will attempt to recognize the header row as an actual product record and will display an error message indicating the inability to import that record.

Step 2: USING THE IMPORT TOOL UTILITY

To access the utility: click **Start**, highlight **Programs**, highlight **PDG Import Tool**, then click **PDG Import Tool**.

(Start > Programs > PDG Import Tool > PDG Import Tool)

The following program window should appear:



To import the comma delimited ASCII file that you created in Step 1, click the 'Import Product File' button. The import routine will begin.

When the import is complete, you will have a 'product.db' file containing your products. If there were any records that did not successfully import, they will be contained in the 'error.log' file along with the errors generated. In addition, Specific Product Text files will be created for each product record containing Specific Product Text. You will recognize these files by their '.txt' suffix. These file as well as the product file will be located in C:\PDGTools.

Step 3: USING NEWLY CREATED PRODUCT FILE

To use this product file in your Shopping Cart, you must first, go into the Merchant Administrator and do a 'Make Changes Live'. Then, rename product.db file to the name of your existing Shopping Cart product file located inside the PDG_Cart directory. By default, this is named 'products.pdg'. Next, you must upload this file to your web store, replacing your existing Shopping Cart product file.

To use the Specific Product Text files, you must upload the folder containing these files into your PDG_Cart directory.

Note: It is recommended that you delete any files ending with .idx from your PDG_Cart directory before uploading the new Shopping Cart product file.