
PDG Shopping Cart

Installation Guide Addendum

Setting File Permissions on Windows 2000

**PDG Software, Inc.
1751 Montreal Circle, Suite B
Tucker, Georgia 30084-6802**

Copyright ©1998 - 2004 PDG Software, Inc.; All rights reserved.

PDG Software, Inc. ("PDG Software") retains all ownership rights to the software programs (referred to herein as "Software") offered by PDG Software and related documentation. Use of the Software and related documentation is governed by the license agreement accompanying the Software and applicable copyright law.

THIS DOCUMENTATION IS PROVIDED "AS-IS" WITHOUT WARRANTY OF ANY KIND. IN NO EVENT SHALL PDG SOFTWARE BE LIABLE FOR ANY LOSS OF PROFITS, LOSS OF BUSINESS, LOSS OF USE OR DATA, INTERRUPTION OF BUSINESS, OR FOR INDIRECT, SPECIAL, INCIDENTAL, OR CONSEQUENTIAL DAMAGES OF ANY KIND, ARISING FROM ANY ERROR IN THIS DOCUMENTATION.

PDG Software, Inc.
<http://www.pdgsoft.com>

August, 2004

Setting permissions in Windows 2000

The contents of the 'PDG_Cart' directory must have "Read," "Write" and "Delete" permissions set. If your ISP or site's host does not have a way for you to set these yourself, you should contact them for assistance and provide them with the following settings information.

Note: If you are configuring permissions on PDG Commerce, you will have a CommConfig folder instead of a CartConfig folder, a PDGCommTemplates folder instead of a PDGTemplates folder, and a PDG_Commerce folder instead of a PDG_Cart folder.

If you are setting the permissions yourself, follow the steps below. Note that you will have to set different permissions for different directory folders and files.

Internet User Configuration

From your desktop, click on Start -> Programs -> Administrative Tools -> Computer Management. Expand the 'System Tools' folder, followed by 'Local Users and Groups.'

Double-click on "[computer name] Browsers" in the right-hand pane of the window. Verify that "IUSR_[computer name]" is listed as a member of this group. If it is not present, then click 'Add.' Now locate the "IUSR_[computer name]", and double-click it to add. Finally, click 'OK' to finish setting the user configurations.

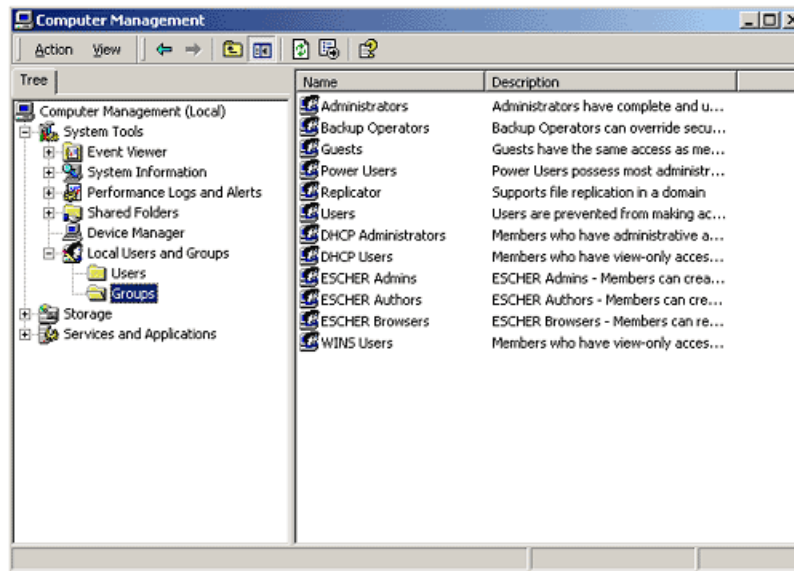


Figure 1-1 Windows Internet User Configuration

Permissions

Right click on the 'My Computer' icon (or go to your host root directory) and select 'Explore.' This action will open Windows Explorer. Locate the 'inetpub' folder, then the 'wwwroot' folder in its subdirectory.

Click on the 'wwwroot' folder and locate the 'cgi-bin' folder. Right click on it and select 'Properties.' The following screen will appear.

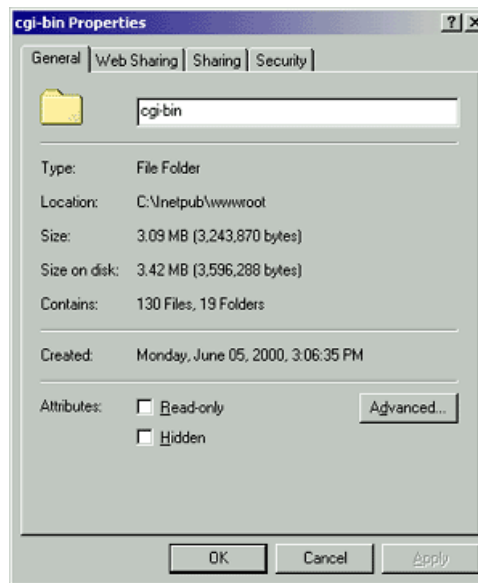


Figure 1-2 CGI Directory Properties

Click the 'Security' tab. The following screen will appear.

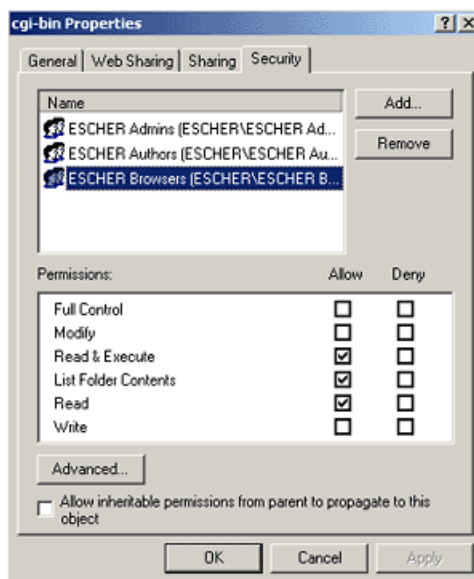


Figure 1-3 CGI Directory Security Properties

Click on the Browser group in the top frame of the window, as indicated above. You must check the 'Read & Execute,' 'List Folder Contents' and 'Read' boxes as indicated above.

Note: Do not check the 'Allow inheritable permissions from parent to propagate to this object' box. If this box is already checked, you must de-select it. A pop-up dialog will appear from which you will need to select the 'Copy' option to preserve your settings.

Once this has been done, click the 'Advanced' button. This will produce the following window.

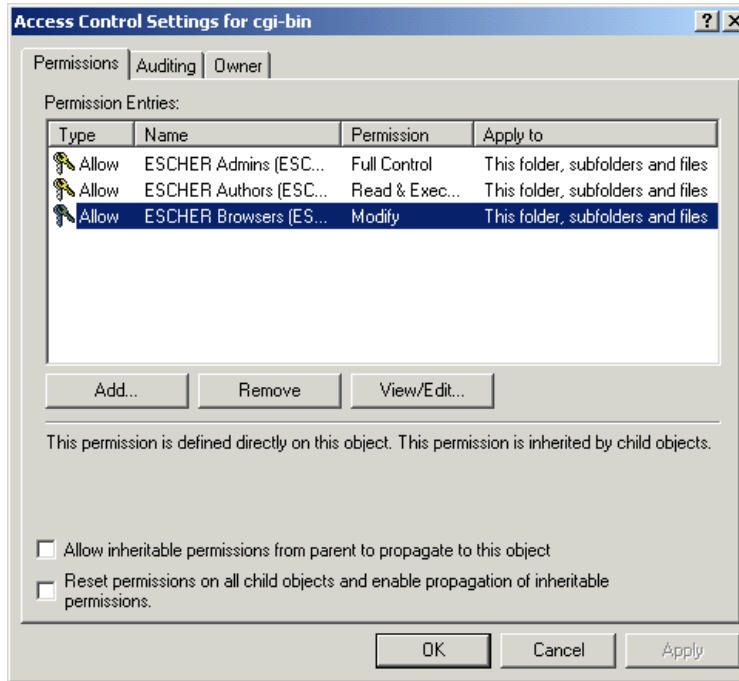


Figure 1-4 CGI Directory Access Control Settings

Click on the Browser group for your Web server, “[computer name] Browsers.” Next, make sure that the two check boxes on the bottom of this window are configured as shown above. Once you have done this, click on the “View/Edit...” button. The following screen will appear:

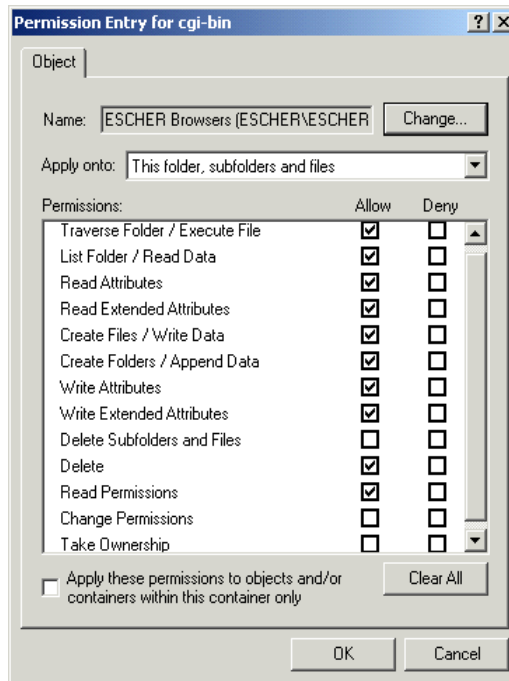


Figure 1-5 CGI Directory Permissions

Next, enter the configuration settings as shown above. The setting for the ‘Apply Onto’ field should be set to “This folder, subfolders and files.” It is important that you configure all of the “Permissions” boxes as indicated and leave the rest blank. Finally, the last check box “Apply these permissions to objects and/or containers within this container only” should be left blank.

Once the permissions have been set for your CGI directory, click on the “OK” button. In the next window, click “Apply,” followed by “OK.”

Now, we will set the permissions for the ‘PDG_Cart’ subdirectory within your CGI directory. Locate the ‘PDG_Cart’ directory on your Web server, right click on it and select “Properties.” Click on the Security tab to display the following window:

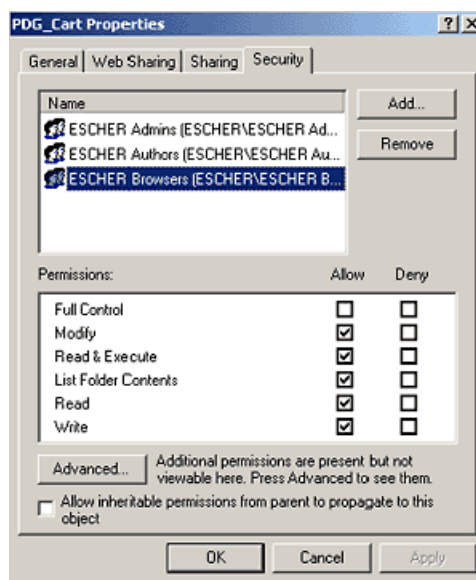


Figure 1-6 ‘PDG_Cart’ Directory Security Properties

Enter the settings as shown above. Again, make sure that the check box at the bottom of the window is NOT checked. Then click on the “Advanced” button.

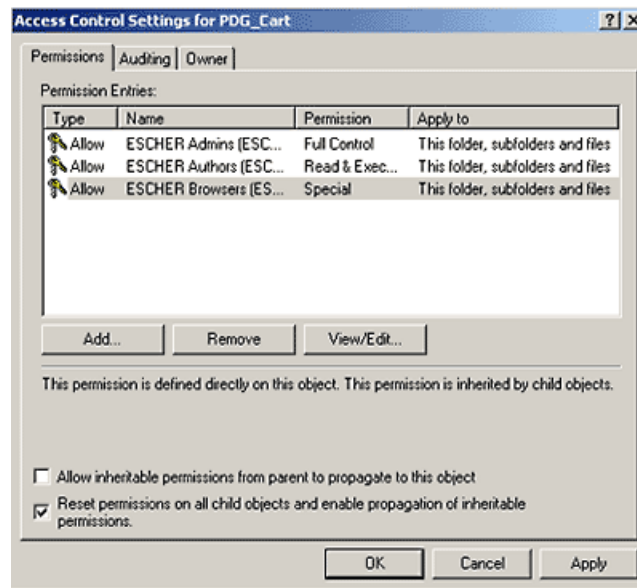


Figure 1-7 'PDG_Cart' Directory Access Control Settings

Ensure the above settings have been configured. Next, click on “[computer name] Browsers,” and click “View/Edit....” The following screen should appear:

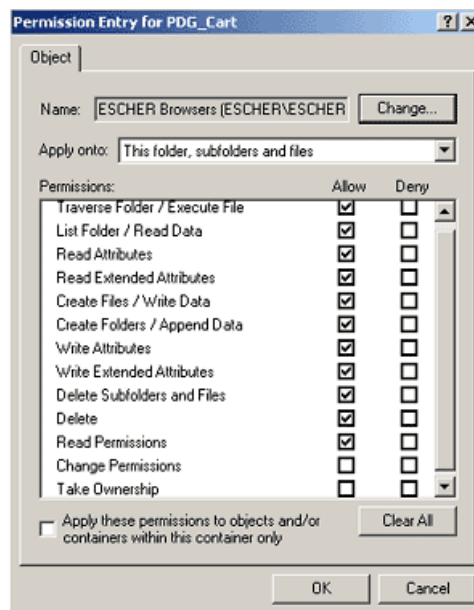


Figure 1-8 'PDG_Cart' Directory Permissions

Once the permissions have been set for the 'PDG_Cart' directory, click on the “OK” button. In the next window, click “Apply,” followed by “OK.”

Now, we will set the permissions for 'CartConfig' directory. Locate that directory with Explorer, right click on it and select "Properties." Next, click on the "Security" tab to display the following window:

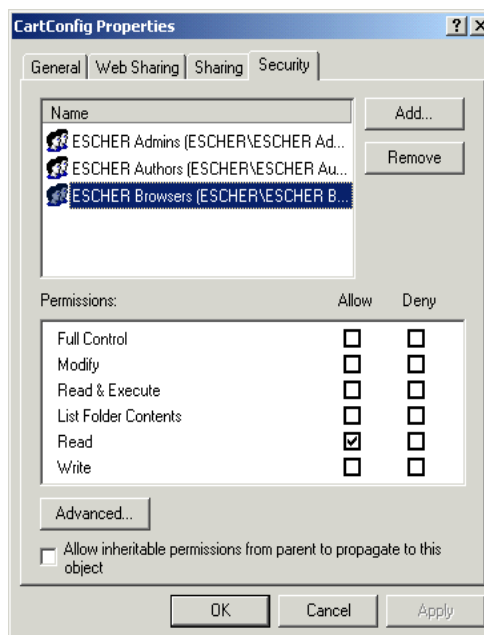


Figure 1-9 'CartConfig' Directory Security Properties

Enter the settings as shown above. Again, make sure that the check box at the bottom of the window is NOT checked. Then click on the "Advanced..." button.

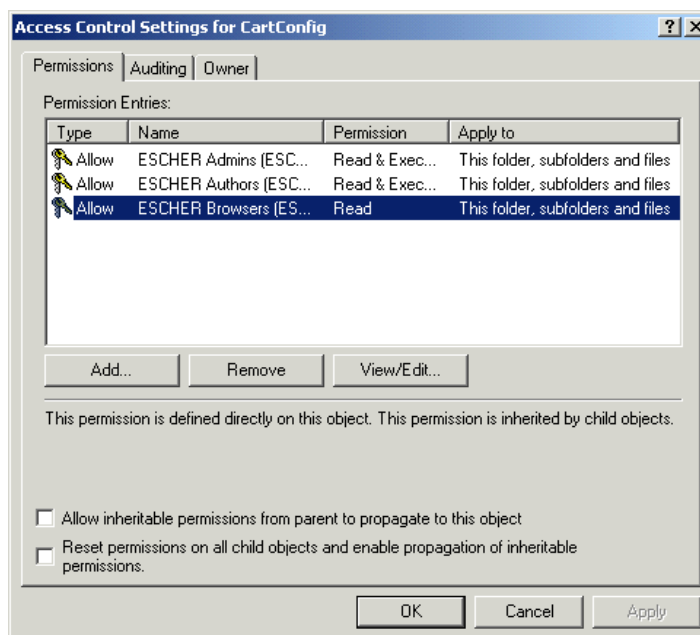


Figure 1-10 'CartConfig' Directory Access Control Settings

Ensure the above settings have been configured. Next click on “[computer name] Browsers,” and click “View/Edit...” The following screen should appear:

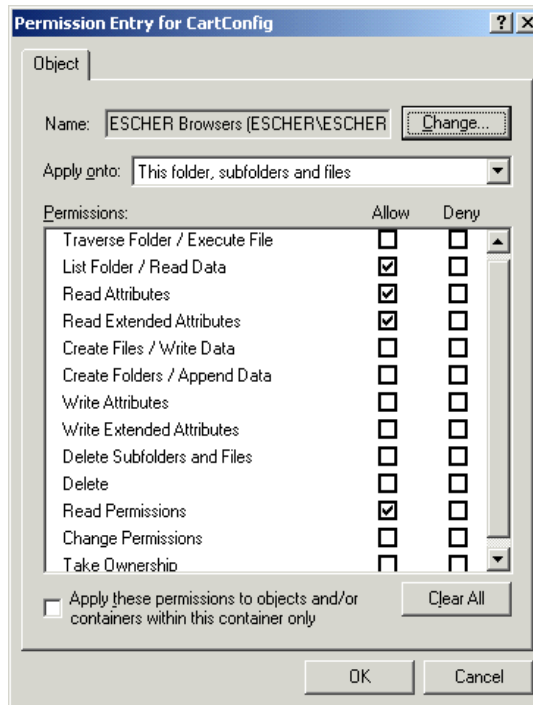


Figure 1-11 'CartConfig' Directory Permissions

Once the permissions have been set for the 'CartConfig' directory, click on the "OK" button. In the next window, click "Apply," followed by "OK." You should follow the same instructions used for the 'CartConfig' directory to set the permissions for the 'PDGTemplates' folder. However, please note that the 'Allow inheritable permissions from parent to propagate to this object' box should be checked for the 'PDGTemplates' folder.

Next you must configure the IIS 5 settings.

Internet Information Server Settings

To set the appropriate IIS settings, follow the steps below.

From your desktop, click on Start -> Programs -> Administrative Tools -> Internet Service Manager

The following screen should appear.

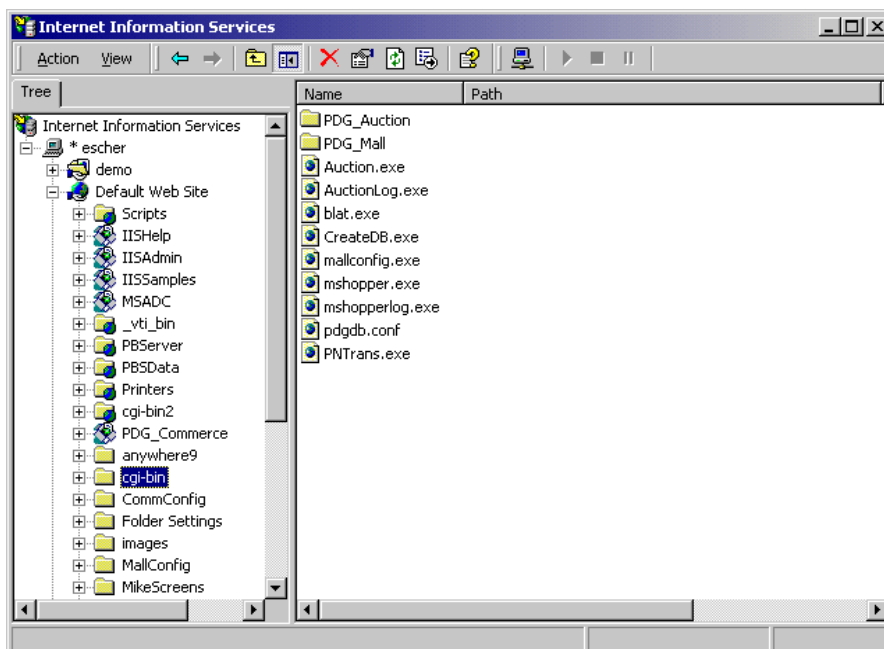


Figure 1-12 Internet Information Server Settings

Locate the Default Web Site folder, then the CGI directory.

Right click on the CGI directory and select “Properties.” The following screen should appear:

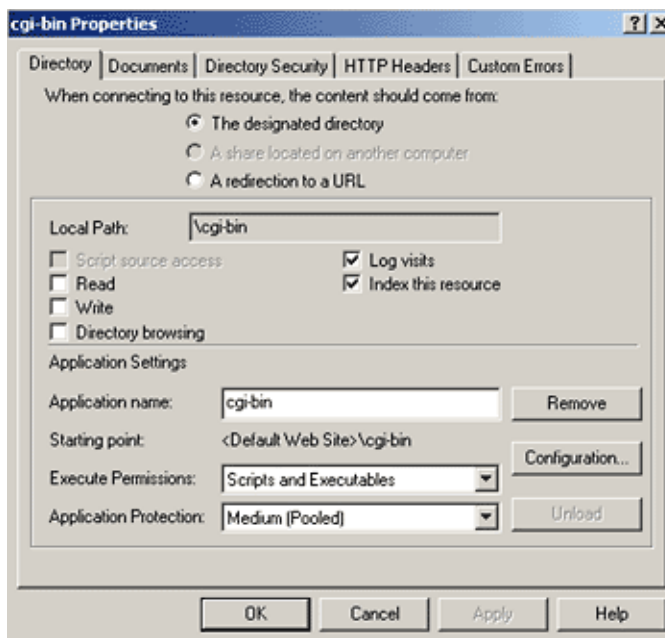


Figure 1-13 CGI Directory Settings for IIS

Enable ONLY the settings shown on the sample screen. Next, find the 'PDG_Cart' directory, and enable the same settings as indicated below.

Note: There should be a few small differences between the picture and your settings. See below for information.

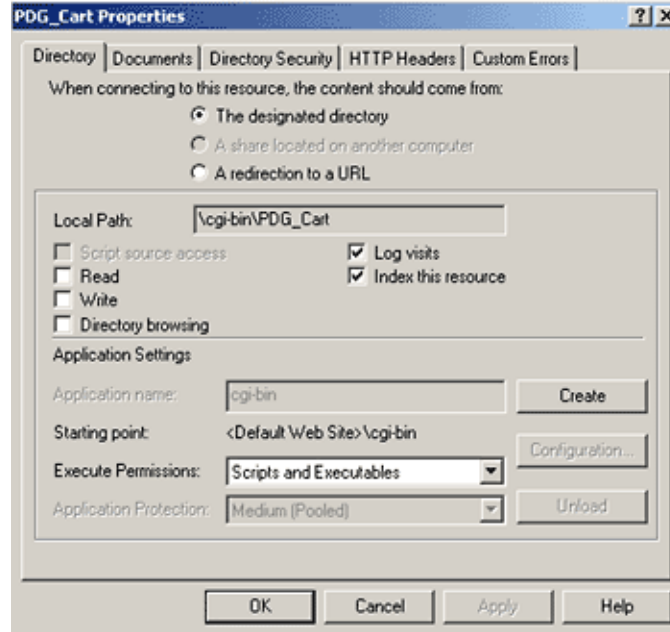


Figure 1-14 'PDG_Cart' Directory Settings for IIS

This completes your permissions settings for PDG Shopping Cart when being run on a Windows 2000 server.

 *End*