
PDG Shopping Cart

Installation Guide Addendum

Setting File Permissions on Windows NT

**PDG Software, Inc.
1751 Montreal Circle, Suite B
Tucker, Georgia 30084-6802**

Copyright ©1998 - 2004 PDG Software, Inc.; All rights reserved.

PDG Software, Inc. ("PDG Software") retains all ownership rights to the software programs (referred to herein as "Software") offered by PDG Software and related documentation. Use of the Software and related documentation is governed by the license agreement accompanying the Software and applicable copyright law.

THIS DOCUMENTATION IS PROVIDED "AS-IS" WITHOUT WARRANTY OF ANY KIND. IN NO EVENT SHALL PDG SOFTWARE BE LIABLE FOR ANY LOSS OF PROFITS, LOSS OF BUSINESS, LOSS OF USE OR DATA, INTERRUPTION OF BUSINESS, OR FOR INDIRECT, SPECIAL, INCIDENTAL, OR CONSEQUENTIAL DAMAGES OF ANY KIND, ARISING FROM ANY ERROR IN THIS DOCUMENTATION.

PDG Software, Inc.
<http://www.pdgsoft.com>

August, 2004

Windows NT Permissions

Setting your PDG Shopping Cart permissions in Windows NT

The contents of the 'PDG_Cart' directory must have "Read" "Write" and "Delete" permissions set. If your ISP or site's host does not have a way for you to set these yourself, you should contact them for assistance and provide them with the following settings information.

Note: If you are configuring permissions on PDG Commerce, you will have a CommConfig folder instead of a CartConfig folder, a PDGCommTemplates folder instead of a PDGTemplates folder, and a PDG_Commerce folder instead of a PDG_Cart folder.

If you are setting the permissions yourself, follow the steps below.

Step 1.

Right click on the "My Computer" icon and select "Explore." This action will open Windows Explorer. Locate the 'Inetpub' folder, then the 'wwwroot' folder in its subdirectory.

Note: Your Web store's root directory may have a different name.

Clicking on the 'wwwroot' folder, locate the 'cgi-bin' folder and select "Properties." Next, click the "Security" tab, then press the "Permissions" button – as illustrated in the graphic below.

You will need to set the permissions in each directory by right clicking on the 'cgi-bin,' 'PDG Cart,' 'CartConfig,' 'PDGTemplates,' and 'Images' folders and selecting "Properties."

The correct permissions should be set as follows:

Folder	Permissions	Check “Replace Permissions on Existing Files”
cgi-bin	Read (RX)(RX)	Yes
PDG_Cart	Full Control (All)(All)	Yes
CartConfig	Read (RX)(RX)	Yes
PDGTemplates	Read (RX)(RX)	Yes
Images	Read (RX)(RX)	Yes

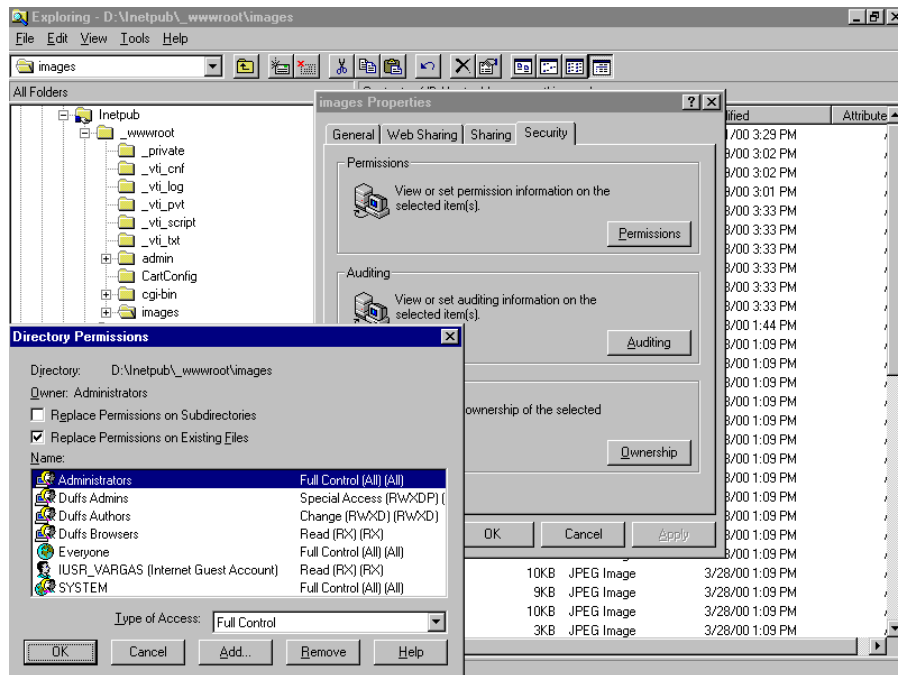


Figure 1-1 'wwwroot' Properties Dialog Box

Step 2.

The chart below illustrates how the permissions should be set on Microsoft's Internet Information Server.

First of all, select the “Programs” field from your Windows “Start” menu. Then select ‘Windows NT 4.0 Option Pack’ (or the option pack that corresponds to the version that you are currently running). Next click “Microsoft Internet Information Server,” then “Internet Service Manager.” These actions will bring up the Management Console. A screen similar to the following should appear.

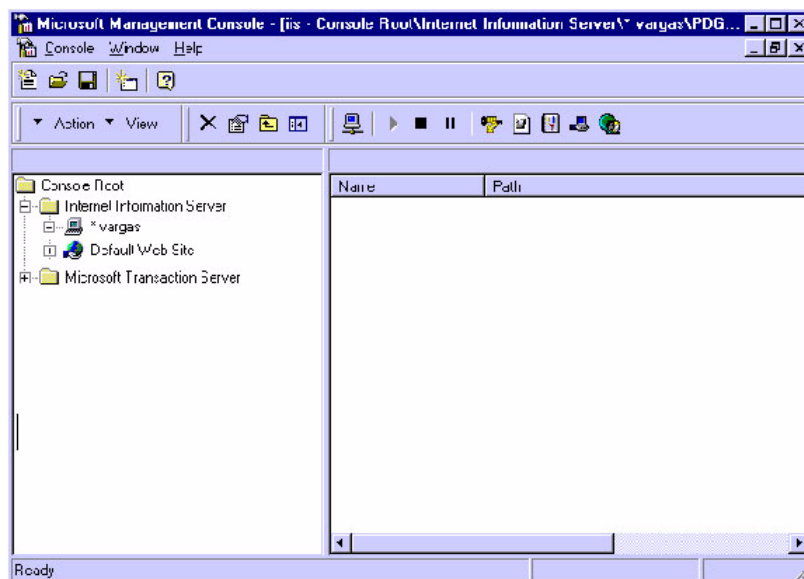


Figure 1-2 Microsoft Management Console

Locate your Web site’s root folder. Your screen should appear similar to the one shown above.

Locate each of the folders specified in the chart below, beginning with the ‘cgi-bin’ folder. Please take note of the following four points:

- The permissions are set by right clicking the “Properties” section of each folder. These settings are made in the “Directory” section.
- Specifically, the “Read,” “Write” and “Log Access” settings are made in the “Access Permissions” section and the “Execute” setting is made in the “Permissions” section.
- An “X” in the chart indicates that the permission should be set, a blank field indicates that the permission should not be checked.
- Be sure to click “Apply” then “OK” to implement the correct settings

Folder	Read	Write	Execute	Log Access
cgi-bin			X	X
PDG_Cart			X	Optional
ProdText	X	X		Optional
PDG Templates	X		X	Optional
Email Templates	X	X		Optional
CartConfig	X			Optional

 End

